

**Institute for International Economic Policy Working Paper Series  
Elliott School of International Affairs  
The George Washington University**

**Long-Term Impacts of High Temperatures on  
Human Capital and Economic Productivity**

**IIEP-WP-2015-18**

**Ram Fishman  
Jason Russ  
Paul Carrillo  
George Washington University**

**October 2015**

Institute for International Economic Policy  
1957 E St. NW, Suite 502  
Voice: (202) 994-5320  
Fax: (202) 994-5477  
Email: [iiep@gwu.edu](mailto:iiep@gwu.edu)  
Web: [www.gwu.edu/~iiep](http://www.gwu.edu/~iiep)

# Long-Term Impacts of High Temperatures on Human Capital and Economic Productivity

Ram Fishman\*, Jason Russ\*\*, Paul Carrillo\*\*\*

High temperature anomalies have recently been shown to have adverse short-term impacts on multiple health and socio-economic outcomes. A well established literature on the impacts of early life stress on life-long human capital accumulation has led us to hypothesize that high temperature anomalies can also have long-term impacts on economic productivity. Using unique data sets on historical weather and the earnings, place and date of birth of all 1.5 million formal employees in Ecuador, we find that women who have experienced a 1°C increase in average temperature while in-utero earn 1.1%-1.7% less as adults. The results are highly robust and suggest warming may already have caused adverse long-term economic losses “in the pipeline” that have not been appreciated to date.

Keywords: Climate Change, Economic Impacts, Fetal Origins

**Acknowledgments:** we are grateful for support by the Institute for International Economic Policy at George Washington University. This paper has benefited from comments and suggestions by seminar participants at George Washington University, Aalto University, UC Berkeley, the Hebrew University of Jerusalem and at the Washington Area Development Economics Conference, NEUDC 2015, and the 3rd World Bank Urbanization and Poverty Reduction Research Conference. We thank Doug Almond, Antonio Bento, Carmel Chiswick, Solomon Hsiang, Remi Jewab, Arun Malik, Martin Ravallion and Stephen Smith for helpful suggestions and comments.

---

\* George Washington University and Tel Aviv University. Contact Email: [rfishman@gwu.edu](mailto:rfishman@gwu.edu)

\*\* George Washington University. Contact Email: [jruss@gwu.edu](mailto:jruss@gwu.edu)

\*\*\*George Washington University. Contact Email: [pcarrill@gwu.edu](mailto:pcarrill@gwu.edu)

Growing interest in the future impacts of climate change has spurred a burgeoning literature on the economic impacts of high temperatures (see Dell et al, 2012, for a review). Multiple analyses of historical weather and socio-economic data have now produced a substantial body of robust evidence that high temperature anomalies lead to a range of adverse, contemporaneous social, economic and health impacts, including reductions in economic productivity and growth in both the agricultural and non-agricultural sectors (Deschenes and Greenstone, 2007; Lobell, Schlenker, and Costa-Roberts, 2011; Schlenker and Lobell, 2010; Welch et al, 2010; Guiteras, 2009; Fishman, 2011; Hsiang, 2010; Dell et al, 2012; Sudarshan and Tewari, 2011; Zivin and Neidel, 2014; Deryugina and Hsiang, 2014), reductions in birthweight (Deschens, Greenstone and Guryan, 2009), increases in morbidity (Burgess et al, 2011; Patz et al, 2005; McMichael, Woodruff, and Hales, 2006), crime and conflict (Hsiang, Burke and Miguel 2013; Ranson 2012; Blakeslee and Fishman 2013).

Another, independent body of evidence establishes the long-term impacts of early life stress on adult socio-economic indicators, health and well-being. In particular, the *fetal origins hypothesis* posits that in-utero circumstances can have substantial long-term impacts on human development. Numerous studies have provided evidence in support of this hypothesis, finding that economic, environmental or disease-related stress in infancy or in-utero lead to long-term impacts on physical and cognitive health, educational attainment and wages (Almond and Curie, 2011). When combined with the evidence on the multiple socio-economic and health related impacts of high temperature anomalies, this suggests that individuals who are exposed to high ambient temperatures in-utero or in infancy may experience life-long and long-term negative consequences through a number of possible channels, both physiological and economic (for example, declines in income or economic hardship can reduce consumption of crucial nutritional inputs by pregnant women). This, in turn, would suggest that the warming that has already taken places in the past few decades may incur hitherto under-appreciated, long-term economic losses. Despite its importance, to the best of our knowledge, this potential linkage has not yet been hypothesized or empirically tested.

In this paper, we investigate the effect of high temperature anomalies around the time of birth on formal earnings as an adult. Economic theory suggests that in well functioning markets, wages provide an accurate indicator of economic productivity and human capital, including

physical and cognitive function. A relationship between temperature anomalies in-utero and adult earnings would therefore measure the total economic losses associated with long-term human capital losses resulting from stress in-utero, even if the contribution of each potential channel of causation may not be possible to measure directly (figure 1).

Our analysis makes use of a unique data set on the 2010 earnings of all 1.5 million formal sector workers in Ecuador, born between 1950 and 1989, that was merged with civil registry data to identify the place and time of birth of these individuals, and then merged with historical weather data sets to identify temperature and precipitation levels around the time of birth (including in-utero). A regression analysis of the relationship between adult earnings and temporal temperature anomalies revealed that higher temperatures in-utero lead to significantly lower adult earnings for women, with a 1°C increase in average monthly temperature in-utero leading to a 1.1%-1.7% decrease in adult earnings. These results are highly robust to the inclusion of fine geographic controls, localized annual cycles and time trends, and to various falsification tests. Since these estimates are derived from random, unexpected deviations of monthly temperatures from local, long-term means and trends, we can rule out the possibility that confounding variables are driving the association. Thus, even though the reduced-form analysis does not allow us to identify which of the multiple established negative impacts of high temperatures is driving the association, the random nature of temperature variations over time within a geographical locality facilitates causal inference (Dell et al, 2012).

Several previous studies have used a similar methodology to find long-term impacts of drought or floods at the year of birth on the welfare, physical and cognitive health of farming households in low-income countries (Maccini and Yang, 2008; Aguilar and Vicarelli, 2011; Tiwari et al, 2013). We believe this study to be the first to focus on temperature anomalies, or to relate weather anomalies to administrative formal earning data. In addition, our sample consists of adults born in both urban and rural areas that are employed in the formal sector of a middle-income economy, and therefore have higher earnings and education levels than the samples studied in previous studies. Our findings are consistent with a small number of other studies that have found detrimental short-term impacts of high temperatures in-utero on post-birth health outcomes. For example, birthweight in the U.S. has been shown to be reduced by exposure to high temperatures in-utero (Deschens, Greenstone and Guryan, 2009), and low birthweight is

known to be associated with lower educational attainment and other adult outcomes (Black, Devereux, and Salvanes, 2007; Bharadwaj, Lundborg, and Rooth, 2015). However, we extend these results by directly observing much longer-term, economic impacts of high temperatures. As far as we are aware, such an analysis has not yet been attempted.

## Materials and Methods

**Data:** Ecuador is a relatively small, middle-income country in South America with a population of about 16 million residents. Over the time period in which our sample was born, GDP per capita has increased significantly, and at the same time, infant mortality has fallen precipitously (Figure S1).

Earnings data were obtained from the Ecuadorian Tax Authority. This dataset contains the 2010 annual earnings of all Ecuadorians working in the formal sector, i.e. all workers employed in firms that report corporate tax returns to the Tax Authority. The Tax Authority complemented their earnings data with information from the National Civil Registry, which includes several demographic characteristics of workers including their gender, year and month of birth, place of birth (at the level of a canton, a small political administrative unit of which there are 218 in Ecuador, and educational attainment. Our sample includes individuals born between the year 1950 and 1989, implying that all individuals in our dataset are between 21 and 60 years old at the time their earnings are reported. Unfortunately, the data does not allow us to group individuals by family unit, or to observe the characteristics of parents or the current place of residence.

Precipitation and Temperature data is based on the 1900-2010 Gridded Monthly Time Series on Terrestrial Air Temperature, and the 1900-2010 Gridded Monthly Time Series on Terrestrial Precipitation from the University of Delaware (Willmott and Matsuura, 2001). The gridded data was used to calculate monthly temperature and precipitation in each of Ecuador's 218 Cantons through spatial averaging (see the SI section and figure S2). Summary statistics for the earnings and weather data are given in Table S1.

**Regression Analysis:** We employ regression analysis to investigate the correlation between in-utero weather and adult earnings. Regressing adult earnings on weather patterns *across*

geographical locations of birth can generate biased estimates because of potential unobservable confounding variables. We therefore follow previous studies (Dell et al, 2012) and base our estimates on local temporal deviations of weather from the weather that would be expected based on the long-term mean in each locality and calendar month, as well the long-term trends in each locality. These deviations are likely to be random and unexpected, and therefore orthogonal to any possible confounders, facilitating causal inference. To isolate these *localized* and unexpected temporal fluctuations in weather, the regression includes a rich set of controls which include: location (each of Ecuador’s 218 cantons) fixed effects that are interacted with fixed effects for each calendar month, in order to capture the long-term, month specific expected weather; year fixed effects (the latter flexibly control for annual variation in weather that affects the entire country such as ENSO); and long-term, localized flexible time-trends (polynomial functions of the calendar year, which we allow to vary from linear to quartic, in each of Ecuador’s 24 provinces). Controlling for such trends is important, because unrelated trends in weather (such as warming), socio-economic circumstances (due to economic growth) and 2010 earnings (due to age effects) can result in spurious correlations.. The inclusion of this rich set of controls assures that regression estimates are based solely on temporal random fluctuations in monthly temperature within each locale from the long-term mean and trend. The mean magnitude of these anomalies in the sample is 0.5 °C and 4.7 cm of precipitation.

Our main model specification therefore takes the following form:

$$\ln(y_{icmy}) = \alpha_1 + \alpha_2 T_{cmy}^l + \alpha_3 T_{cmy}^f + \alpha_4 R_{cmy}^l + \alpha_5 R_{cmy}^f + f_p(t) + \gamma_{mc} + \theta_y + \varepsilon_i \quad (1)$$

where  $\ln(y_{icmy})$  is (log) income of individual  $i$ , born in canton  $c$ , in month  $m$  of year  $y$ ;  $T_{cmy}^f$  and  $T_{cmy}^l$  are the average temperature (in degrees Celsius) in the canton of birth for the 9 months before birth, and the 9 months after birth, respectively, and  $R_{cmy}^l$  and  $R_{cmy}^f$  are the average monthly precipitation (cm) in the canton of birth for the 9 months before birth, and the 9 months after birth, respectively;  $f_p(t)$  is a province specific time trend (ranging from linear to quartic specifications);  $\gamma_{mc}$  are month-canton fixed effects that capture any unobserved characteristics of every combination of a canton and month of year, such as location specific seasonal cycles; and  $\theta_y$  are year fixed effects.

To account for possible serial or spatial correlations amongst observations, we cluster our main results at several different levels: canton, province-year, region-year<sup>1</sup> and province, but find little impact on the significance of our estimates. Subsequent results have errors conservatively clustered at the province level.

Data limitations restrict the analysis to consider average monthly temperature anomalies, even though some of the impacts of high temperature may occur as a result of extreme days. The occurrence of extremes is likely to be correlated with high monthly averages, however, and any associated measurement error is likely to bias estimates downwards. The use of a linear form of temperature and precipitation in the regressions is justified by a non-parametric analysis that reveals an approximately linear relationship between Log earnings and in-utero temperatures (figure S3).

## Results

**Impacts on Earnings.** Estimates of regression (1) are reported in Tables S3a and S3b, for females and males, respectively, and summarized in figure 2 (for females). Both the regression tables report estimates from regressions in which province-specific time trends are allowed to enter into the regression in linear, quadratic, cubic, and quartic form (columns 1-4).

Regression results reveal that females born in cantons which are 1°C warmer than average during the 9 months before birth tend to earn 1.09%-1.69% less as adults. In comparison, temperature anomalies during the 9 month period following birth have smaller and statistically insignificant impacts, in line with other studies that find strongest effect of stress occurring in-utero. Rainfall anomalies in-utero also have positive and statistically significant effect, in agreement with previous studies, with a 100 mm increase in rainfall leading to a

---

<sup>1</sup> Provinces are Ecuador's largest political unit. There are 24 provinces in Ecuador, including the Galapagos province, which is excluded from our study, leaving 23 provinces. Cantons are the second largest political unit. Our dataset consists of births from 218 cantons. Regions are geographic based groupings of provinces. See section II for a description of Ecuador's three regions which are included in this paper (the Galapagos region is Ecuador's 4<sup>th</sup> region, which is omitted).

1.03%-1.45% increase in adult earning for women. As with temperature, rainfall anomalies in the 9 months following birth have no statistically significant effect on income.

The corresponding estimates for males, reported in in Table S3b, while of similar sign, are smaller, less precise and less robust to the specification of time trends, and the difference between the impacts of temperature and precipitation anomalies on males and females is statistically significant ( $p=0.04$ ). We discuss possible reasons for this gender disparity below, but note that similar gender differences were found in previous studies.

A similar analysis for the impact of in-utero temperature anomalies on educational attainment did not reveal statistically significant patterns (see SI section and tables S4a-S4c), potentially because the educational data available to us is limited to rather rough indicators of high school and college completion.

**Falsification Tests.** In order to examine the possibility that these results are driven by spurious patterns in the earnings or weather data, we subjected them to a number of falsification tests. The first test involved re-estimating regression (1) while replacing each individual's in-utero weather conditions with weather conditions that occurred at the location of birth up to 10 years before or after birth. The resulting coefficient estimates are plotted in figure 3 against the "shift", measured in years. As would be expected, all "shifted" coefficients are smaller than the "true" coefficient, plotted at zero, and other than the immediate lag and lead, are all statistically insignificant. The parallel results for rainfall are displayed in figure S4. Correlations with neighboring lags and leads of the in-utero weather is not inconsistent with our theory, as the could reflect serial correlation in annual whether or actual, persistent economic impacts of weather shocks occurring prior to birth or at early age. The diminishing magnitude and statistical precision of impacts related to shifted weather variables, however, is highly consistent with our hypothesis.

The second falsification test involved re-estimating equation (1) repeatedly on 10,000 "placebo" data sets in which all weather data was randomly re-shuffled between cohorts, either across space, across time or both. As would be expected, histograms of all resulting "placebo" coefficient estimates are centered around zero (figure S5), and the coefficient estimated using the "real" data set lies at the extreme left end of the distribution (and is smaller than 99% of the placebo estimates, whether re-shuffling occurred across space, time, or both). Together, these tests indicate that the likelihood that the results found have occurred by chance is very low.



**Urbanization.** The results of the “reduced-form” statistical analysis, while robust and causally interpretable, do not allow us to isolate the mechanism(s) at play. However, the large literature on the range of adverse impacts of high-temperature anomalies provides several possible mechanisms, some of which, like increases in Malaria incidence (McCord, 2015) can be directly relevant for Ecuador.

However, exploring heterogeneity in impacts across areas with varying rates of urbanization can help shed light on the degree to which agricultural income declines may be driving the observed temperature-earning relationship. A regression that included an interaction between in-utero temperature anomalies and the degree of urbanization of each canton (in the 1990s) revealed that while precipitation anomalies tend to only occur in rural areas, in agreement with the hypothesized central role of agricultural production shocks in channeling the impacts of precipitation, no such effect was found for temperature anomalies. This may be that non-agricultural channels may have a central role in mediating the impacts of high temperatures (see SI section and table S6 for details).

## **Discussion**

**Gender Disparities.** The appearance of larger and more statistically significant impacts of in-utero weather on women relative to that on men are noteworthy, because our results, however, suggest that the impacts of high temperatures (mostly) occur in-utero, when an infant’s gender is likely to be unknown to parents. One possible interpretation is that corrective investments can be made after birth to affected infants, and that these are less likely to be provided to girls. This possibility is consistent with the results of other studies that show that in poor households, negative household shocks often tend to affect girls more than boys, presumably because of gender bias in intra-household resource allocation in times of economic stress. For example, Jayachandran (2005) find that infant mortality due to poor air quality was higher amongst females than males. Maccini and Yang (2008) find that early life rainfall affects the future incomes, health, and schooling of only females. Baird, Friedman and Schady (2011) find that in developing countries, the infant mortality rate of females is much more sensitive to economic shocks than the infant mortality rate of males.

A second possible explanation has to do with the well-documented higher mortality rates of male fetuses subjected to in-utero stress in relation to females (Almond and Mezunder, 2011), which is also consistent with the evidence presented below of reductions in cohort sizes exposed to in-utero high temperature anomalies, that are larger for females than for males. Fetal or infant mortality<sup>2</sup> can remove the most vulnerable individuals from the adult sample, leading to underestimates of the true impact of high temperature in-utero. If mortality is higher for males, this can also explain the lower impacts observed for males over females (Almond and Currie, 2011).

**Potential Selection Mechanisms.** Selection into the sample can be a potential source of bias in our estimates (Almond and Currie, 2011). Since our sample consists of current formal sector employees in Ecuador, selection can occur if probabilities of survival (including live births), emigration, and participation in the formal sector. To test for selection, we also estimate the effect on in-utero weather on the size of a cohort of individuals born in the same canton, year and month, and on the size of a cohort of formal sector workers born in the same canton, year and month. These impacts represent the effect of weather anomalies on the probability of live births, survival to adulthood and remaining in Ecuador, and on the probability of being employed in the formal sector as adults. To do this, we match individuals in the formal sector income dataset with data from Ecuador's civil registry, which lists all working age Ecuadorians. The civil registry data contains 8.2 million individuals that are approximately half females (14.2%, and 25.9% of females and males, respectively, earned formal sector income in 2010). We then estimate similar regressions to (1) except that the dependent variable is the logarithm of the size of a cohort or a formal sector cohort (and each observation in the sample represents a cohort).

Regression results, reported in tables S5a-e, indicate that cohorts that experience a 1°C increase in in-utero temperature tend to be smaller by 2.6%. The effects are somewhat larger for males (3.0%) than for women (2.2%) and are statistically significant (table S5a). Similar effects are found on the sizes of formal sector workers, with male formal sector cohorts declining by 2.7% and female formal sector cohorts declining by 2.1% (table S5c). The similar magnitudes of these impacts suggests the probably of being employed in the formal sector, conditional on

---

<sup>2</sup> Note that because our data from the civil registry only includes living people and not all births, we cannot distinguish between cohorts that are smaller because of additional fetal deaths, or additional infant, or even later in life mortality.

survival to adulthood, is unaffected by in-utero weather, and indeed, a regression of the ratio of formal cohort and total cohort sizes (table S5d), or (at the individual level) of this probability on in-utero temperature fails to find a statistically significant relationship (table S5e). We discuss the implications of these results below.

Selection through survival to adulthood, which is well recognized in the fetal origins literature, and for which we find some evidence, is likely to downward bias regression estimates, since it is reasonable to assume that individuals who would have survived would exhibit lower earnings (Almond and Currie, 2011). This suggests the true effects are larger than our estimates. It is, however, less straightforward to predict potential biases associated with selection through potential emigration away from Ecuador, and our data does not allow us to differentiate between emigration and survival as driving the cohort size results. If adverse weather reduces the probability of entering the formal sector (possibly through the same mechanism which reduces future income), then our income regression results would be biased downwards, again leading us to under-estimate the true effect. However, we find no evidence of this type of selection (SI section, tables S5a-e).

Another form of selection that can drive the reduced cohort sizes could occur if pregnant women tend to migrate away from regions with adverse weather before giving birth. Weather induced migration has been documented in both developing and industrialized countries (Feng et al, 2010; Feng et al 2012; Bohra-Mishra et al, 2014). If such weather migrants are more likely to belong to the wealthier part of the income distribution (Fishman et al, 2014), this could lead to a mechanical negative effect on the adult income of cohorts exposed to adverse weather in-utero that is not actually driven by the impacts of high temperatures on human capital. Migration by wealthier pregnant women could therefore results in over-estimates of the true effect on earnings. However, the divergent impacts on male and female earnings is suggestive against this potential explanation, since gender is in all likelihood unobservable before birth in the period of our study, so for migration to explain the observed patterns the female earnings distribution would need to decline more steeply at the high income tail than the male distribution. However, the two distributions are nearly identical, and if anything, the male distribution declines more steeply (figure S6). In addition, to the extent that migration tend to be relatively localized and occurs largely within the same province, then total province-wide cohort size should not decline.

However, cohort size regressions estimated at the province level result in very similar estimates to those estimated at the canton level (table S5b as compared to table S5a). We conclude that the sum of the evidence seems to suggest our estimates of the effect of in-utero weather on adult female earnings may be biased downward, if at all.

## **Conclusion**

We document a robust, economically meaningful detrimental influence of hotter in-utero temperatures on female formal sector earnings in Ecuador. We find a similar, but less robust relationship with lower in-utero rainfall. .

The external validity of our results to other countries is limited in some dimensions, given Ecuador's small size and the fact that we only observe formal sector earnings. On the other hand, that these impacts are occurring for formal sector workers in a middle-income country is striking. Previous studies have mostly focused on samples that were dominated by rural farming households. Additional studies of similar relationships would be important to conduct in other contexts.

The size of the effect we find is economically meaningful. A simple extrapolation of our estimates suggests that future warming may have additional economic impacts that have not been sufficiently appreciated to date. In fact, our findings suggest that the warming that has already occurred in Ecuador may have already resulted in large and to date unappreciated economic losses. However, such extrapolations must be made with great caution, since, just as for short-term impacts of high temperatures, the long-term impacts of an isolated temperature shock may be quite different than that of a prolonged persistent change in temperature (Dell et al, 2013). Nevertheless, our results may help improve our understanding of the mechanism driving the well established cross-sectional inverse relationship between temperatures and economic income (Nordhaus, 2006).

## References

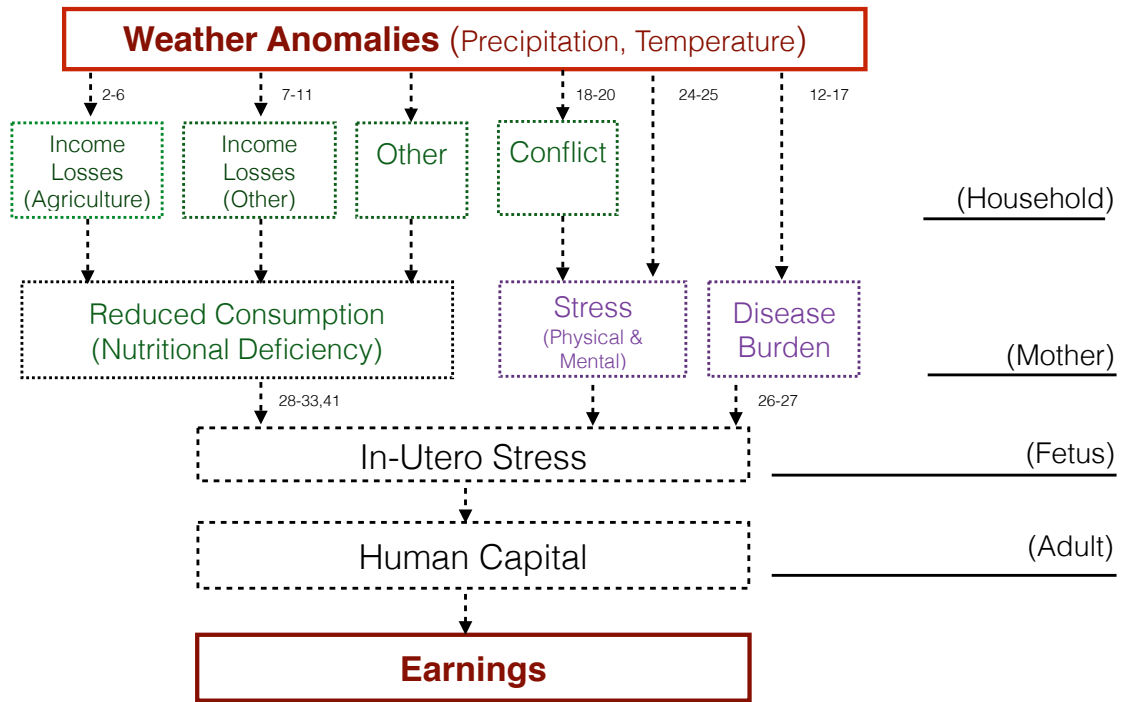
1. Dell, Melissa, Benjamin F. Jones, and Benjamin A. Olken. "What Do We Learn from the Weather? The New Climate–Economy Literature." *Journal of Economic Literature* 52.3 (2014): 740-798.
2. Deschenes, Olivier, and Michael Greenstone. "The economic impacts of climate change: evidence from agricultural output and random fluctuations in weather." *The American Economic Review* (2007): 354-385.
3. Lobell, David B., Wolfram Schlenker, and Justin Costa-Roberts. "Climate trends and global crop production since 1980." *Science* 333.6042 (2011): 616-620.
4. Schlenker, Wolfram, and David B. Lobell. "Robust negative impacts of climate change on African agriculture." *Environmental Research Letters* 5.1 (2010): 014010.
5. Welch, Jarrod R., Jeffrey R. Vincent, Maximilian Auffhammer, Piedad F. Moya, Achim Dobermann, and David Dawe. "Rice yields in tropical/subtropical Asia exhibit large but opposing sensitivities to minimum and maximum temperatures." *Proceedings of the National Academy of Sciences* 107, no. 33 (2010): 14562-14567.
6. Guiteras, Raymond. "The impact of climate change on Indian agriculture." Manuscript, Department of Economics, University of Maryland, College Park, Maryland (2009).
7. Fishman, Ram. "More uneven distributions overturn benefits of higher precipitation for crop yields." *Environmental Research Letters* 11.2 (2016): 024004.
8. Hsiang, Solomon M. "Temperatures and cyclones strongly associated with economic production in the Caribbean and Central America." *Proceedings of the National Academy of Sciences* 107.35 (2010): 15367-15372.
9. Dell, Melissa, Benjamin F. Jones, and Benjamin A. Olken. "Temperature shocks and economic growth: Evidence from the last half century." *American Economic Journal: Macroeconomics* 4.3 (2012): 66-95.
10. Sudarshan, Anant, and Meenu Tewari. The economic impacts of temperature on industrial productivity: Evidence from indian manufacturing. Working Paper, 2013.

11. Zivin, Joshua Graff, and Matthew Neidell. "Temperature and the allocation of time: Implications for climate change." *Journal of Labor Economics* 32.1 (2014): 1-26.
12. Deryugina, Tatyana, and Solomon M. Hsiang. *Does the environment still matter? Daily temperature and income in the United States*. No. w20750. National Bureau of Economic Research, 2014.
13. Deschênes, Olivier, Michael Greenstone, and Jonathan Guryan. "Climate change and birth weight." *The American Economic Review* (2009): 211-217.
14. Burgess, Robin, et al. "Weather and death in India." Cambridge, United States: Massachusetts Institute of Technology, Department of Economics. Manuscript (2011).
15. Patz, Jonathan A., et al. "Impact of regional climate change on human health." *Nature* 438.7066 (2005): 310-317.
16. McMichael, Anthony J., Rosalie E. Woodruff, and Simon Hales. "Climate change and human health: present and future risks." *The Lancet* 367.9513 (2006): 859-869.
17. McMichael, Anthony J., Rosalie E. Woodruff, and Simon Hales. "Climate change and human health: present and future risks." *The Lancet* 367.9513 (2006): 859-869.
18. McCord, Gordon. "Malaria Ecology and Climate Change". Forthcoming, *European Physics Journal*.
19. Hsiang, Solomon M., Marshall Burke, and Edward Miguel. "Quantifying the influence of climate on human conflict." *Science* 341.6151 (2013): 1235367.
20. Ranson, Matthew. "Crime, weather, and climate change." *Journal of environmental economics and management* 67.3 (2014): 274-302.
21. Blakeslee, David, and Ram Fishman. "Weather Shocks, Crime and Agriculture: Evidence from India." Unpublished Manuscript (2013).
22. Almond, Douglas, and Janet Currie. "Killing me softly: The fetal origins hypothesis." *The Journal of Economic Perspectives* (2011): 153-172.

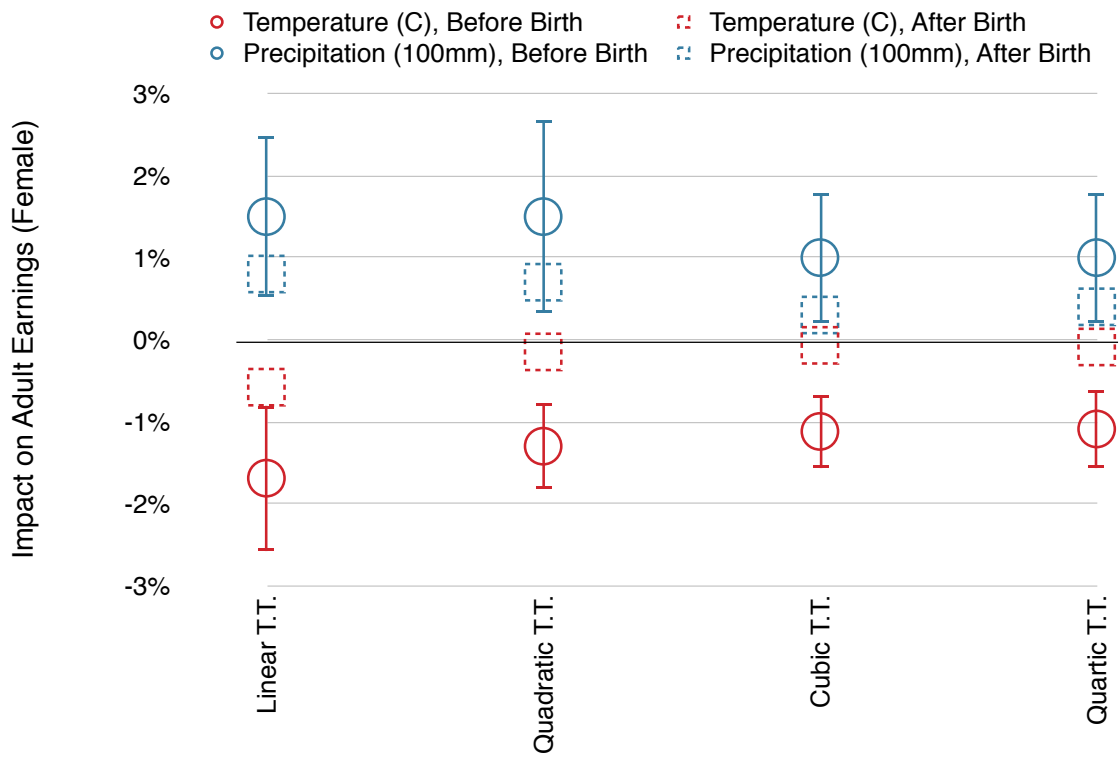
23. Maccini, Sharon L., and Dean Yang. "Under the weather: Health, schooling, and economic consequences of early-life rainfall". No. w14031. National Bureau of Economic Research, 2008.
24. Aguilar, Arturo, and Marta Vicarelli. "El Nino and Mexican children: medium-term effects of early-life weather shocks on cognitive and health outcomes." Cambridge, United States: Harvard University, Department of Economics. Manuscript (2011).
25. Tiwari, Sailesh, Hanan G. Jacoby, and Emmanuel Skoufias. "Monsoon babies: rainfall shocks and child nutrition in Nepal." World Bank Policy Research Working Paper 6395 (2013).
26. Black, Sandra E., Paul J. Devereux, and Kjell G. Salvanes. "From the Cradle to the Labor Market? The Effect of Birth Weight on Adult Outcomes\*." *The Quarterly journal of economics* 122.1 (2007): 409-439.
27. Bharadwaj, Prashant, Petter Lundborg, and Dan-Olof Rooth. *Birth Weight in the Long Run*. No. w21354. National Bureau of Economic Research, 2015.
28. Willmott, C. J. and K. Matsuura (2001) Terrestrial Air Temperature: 1900-2010 Gridded Monthly Time Series (V 3.01),  
[http://climate.geog.udel.edu/~climate/html\\_pages/Global2011/README.GlobalTsT2011.html](http://climate.geog.udel.edu/~climate/html_pages/Global2011/README.GlobalTsT2011.html)
29. Willmott, C. J. and K. Matsuura (2001) Terrestrial Precipitation: 1900-2010 Gridded Monthly Time Series (V 3.01),  
[http://climate.geog.udel.edu/~climate/html\\_pages/Global2011/README.GlobalTsP2011.html](http://climate.geog.udel.edu/~climate/html_pages/Global2011/README.GlobalTsP2011.html)
30. Jayachandran, Seema. "Air quality and early-life mortality evidence from Indonesia's wildfires." *Journal of Human Resources* 44.4 (2009): 916-954.
31. Baird, Sarah, Jed Friedman, and Norbert Schady. "Aggregate income shocks and infant mortality in the developing world." *Review of Economics and Statistics* 93.3 (2011): 847-856.

32. Almond, Douglas, and Bhashkar Mazumder. "Health capital and the prenatal environment: the effect of Ramadan observance during pregnancy." *American Economic Journal: Applied Economics* (2011): 56-85.
33. Feng, Shuaizhang, Alan B. Krueger, and Michael Oppenheimer. "Linkages among climate change, crop yields and Mexico–US cross-border migration." *Proceedings of the National Academy of Sciences* 107.32 (2010): 14257-14262.
34. Feng, Shuaizhang, Michael Oppenheimer, and Wolfram Schlenker. *Climate change, crop yields, and internal migration in the United States*. No. w17734. National Bureau of Economic Research, 2012.
35. Bohra-Mishra, Pratikshya, Michael Oppenheimer, and Solomon M. Hsiang. "Nonlinear permanent migration response to climatic variations but minimal response to disasters." *Proceedings of the National Academy of Sciences*(2014): 201317166.
36. Fishman, Ram, Meha Jain, and Avinash Kishore. "Groundwater Depletion, Adaptation and Migration: Evidence from Gujarat, India." (2013).
37. Hsiang, Solomon M., and Amir S. Jina. *The causal effect of environmental catastrophe on long-run economic growth: evidence from 6,700 cyclones*. No. w20352. National Bureau of Economic Research, 2014.
38. Nordhaus, William D. "Geography and macroeconomics: New data and new findings." *Proceedings of the National Academy of Sciences of the United States of America* 103.10 (2006): 3510-3517.

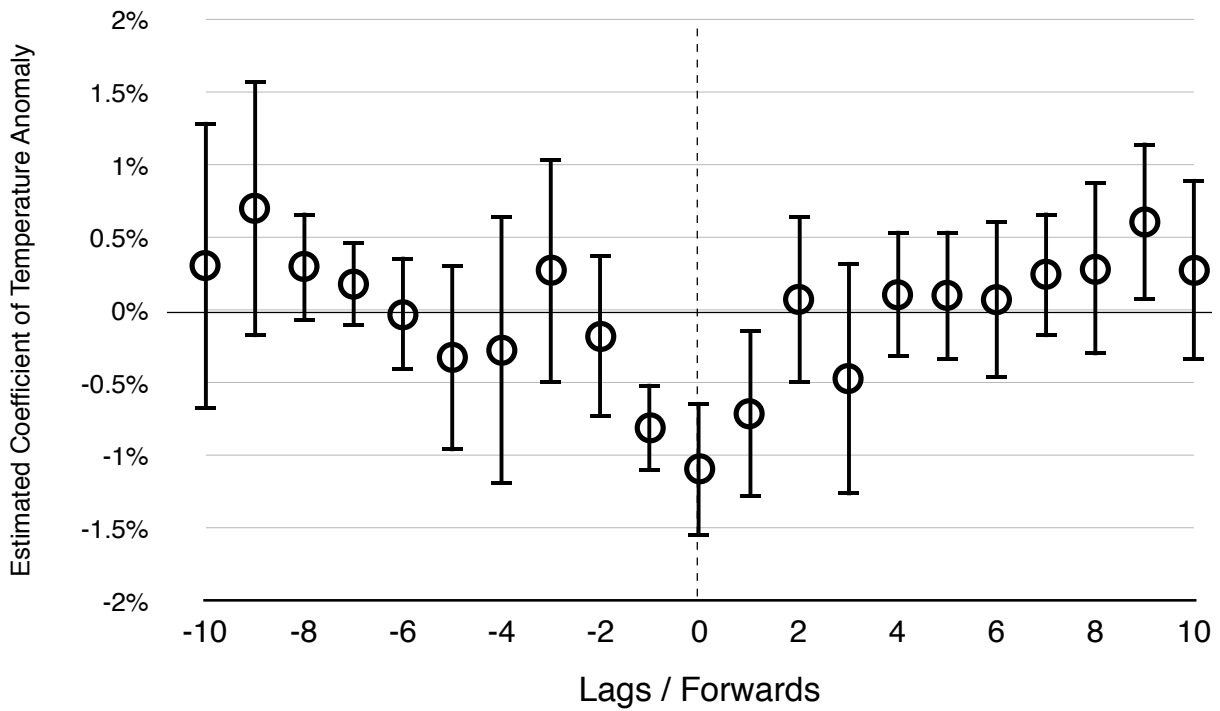




**Figure 1:** Possible channels of influence between weather anomalies in-utero on adult earnings. Observed variables appear in solid red boxes. Potential mediating variables are enclosed in dotted boxes and are unobserved in the data. These are classified into the economic (green boxes) and the physiological (purple boxes) channels. Numbers indicate references containing evidence for the various linkages: references indicated at the top row (household level) contain evidence for the impact of temperature anomalies on a range of outcomes, and references indicated at the bottom row (mother) contain evidence for the long-term effects of these outcomes, independently of whether caused by temperatures. References are meant to provide illustrative examples, and are not intended to provide a comprehensive literature review.



**Figure 2:** Regression estimates for the impact of average monthly temperature (red, degrees centigrade) and precipitation (blue, 100mm) anomalies in-utero (circles) on (Log) adult earnings. Error bars represent 95% confidence intervals. For comparison, dotted square markers represent parallel coefficients for the impacts of average monthly weather during the 9 months following birth (confidence intervals are not shown, but all coefficients are statistically insignificant). Estimates from models with localized time trends ranging from linear to quartic are presented from left to right.



**Figure 3:** Estimated coefficients from variants of regression (1) for females, in which the period of temperature exposure is shifted by -10 to 10 years (horizontal axis) from the real in-utero period. Each marker's vertical position therefore measures the estimated impact of one degree centigrade higher average temperatures at the appropriate period of exposure. For example, the marker at the dotted line (no lag) represents the impact of actual in-utero temperatures discussed in the text. Other markers represent the impact of “placebo” temperature exposures. Error bars represent 95% confidence intervals.

## Supplementary Material

**Data.** The 1900-2010 Gridded Monthly Time Series on Terrestrial Air Temperature and Precipitation from the University of Delaware (Willmott and Matsuura, 2001) compile weather station data from several different sources, and interpolate monthly averages to a 0.5 degree by 0.5 degree latitude/longitude grid, with station nodes centered on the 0.25 degree. In order to merge this gridded data with place of birth identifiers in the earnings data, weather values were averaged across all grid cells falling within each canton, with weights proportional to the fraction of area falling within the canton's administrative boundaries (figure S3). Summary statistics for the earnings and weather data are reported in Table S1.

**Non-Parametric Estimation:** To test for non-linear effects of in-utero weather, we divided the range of observed precipitation and temperature observations into a series of intervals and defined corresponding binary variables that indicate, for precipitation and temperature separately, which of the intervals a given weather observation falls in. For temperature, we divide the 7<sup>0</sup>C-29<sup>0</sup>C range into seven intervals of 3<sup>0</sup>C width each. For rainfall, we divide the 0-30 cm/month range into 7 intervals, where the first 6 intervals are 4cm/month wide each, and the 7<sup>th</sup> interval ranges from 24-30cm/month (we did this in lieu of adding an 8<sup>th</sup> interval because only 8,319 females experienced a value between 28-30cm/month rainfall). We then estimated a semi-parametric version of equation (1) in which the linear weather variables are replaced with these 24 binary variables (7 each for temperature and rainfall, before and after birth, with the indicator of the lowest intervals in each category omitted as a reference value). The estimated coefficients of these in-utero temperature and rainfall indicators are plotted in figure S4. For both temperature and rainfall, we find that the pattern of the relationship is approximately linear, justifying the use of a linear form in our main regressions. However, we note that for rainfall, coefficients tend to be small and quite imprecise.

**Are the Impacts Concentrated in Rural Regions?** If the impacts of weather anomalies are mostly occurring through their effect on agricultural production, one would expect them to be concentrated in rural areas. To examine this hypothesis, we estimate a variant of model (1) that also includes interaction terms between each of the four weather variables and a continuous variable measuring the urbanization rate (the fraction of the population residing in urban

settlements) of each individual's province of birth in 1990.<sup>3</sup> These interaction terms measure the degree to which impacts of weather anomalies are higher in more urbanized areas. The resulting estimates are reported in Table S6.

Consistently with the hypothesis that rainfall anomalies operate mainly through their impact on agricultural production, which is only a major source of income in rural areas, the estimated interaction term of the in-utero rainfall is statistically significant and has a similar magnitude (0.002) but opposite sign to the un-interacted rainfall coefficient (which measures the impact of in-utero rainfall anomalies in completely rural areas). Thus, the more urbanized a province is, the smaller is the effect of in-utero rainfall on the future earnings of those born there, and the estimates point to a negligible effect of rainfall in completely urbanized locations.

The estimated interaction term between in-utero temperature and urbanization, in contrast, is of very small magnitude (-0.001) in comparison to the un-interacted term (0.01). Thus, we find no evidence to suggest that the effects of temperature differ between rural and urban areas.<sup>4</sup> This can be suggestive of a temperature effect that is not primarily agricultural or rural, which would not be inconsistent with the growing body evidence on the numerous non-agricultural impacts of high temperature anomalies on economic productivity and welfare.

**Impacts on Educational Attainment:** Much of the literature on the impact of early life weather shocks is focused on human capital accumulation, including indicators of educational attainment. Unfortunately, our data only provides us with rather crude indicators of educational attainment consisting of whether individuals had completed secondary school (84%) or college (29%, Table S4a). In Tables S4b and S4c, we report estimates of regressions parallel to equation (1) in which the dependent variable is a binary indicator of secondary education and higher education, respectively. We find negative, but small and imprecise impact of in-utero temperature exposure on either of these outcomes.

---

<sup>3</sup> Urban populations rates are only available to us in one time period. The data was obtained from <http://www.citypopulation.de/Ecuador-Cities.html>

<sup>4</sup> Note, however, that the confidence intervals of the interaction term are quite large. As a result, we are also unable to reject urban temperature effects that are substantially stronger or weaker than those in rural areas.

**Impacts on the *Distribution of Earnings*.** In addition to estimating changes in mean cohort earnings, we also examine the impact of temperatures anomalies on the *distribution* of earnings. To do so, we calculate residuals from a regression of (log) earnings on the same fixed effects and (quartic) time trends as in Equation (1), and then plot the residuals for two different sub-samples: those females whose in-utero average temperature was between -0.5 and 0.5 of the local average, and those whose in-utero average temperature was 2°C+ hotter than normal.<sup>5</sup> Histograms of the two sets of residuals are overlaid in figure S8. Perhaps surprisingly, the sample experiencing a 2°C+ hot temperature shock in-utero shows a significant shift in density that mostly occurs in the right-central portion of the income distribution. Even though this is not a conclusive indication, the pattern suggests that the effect does not seem to be primarily driven by the low or high income tails of the earnings distribution.

**Selection and Cohort Size:** We begin by examining whether birth-cohort size is affected by birth-year weather. To do this, we estimate a regression parallel to equation (1) except that the unit of observation is a cohort rather than an individual and the dependent variable is the logarithm of the cohort size, i.e. the number of individuals born in canton  $c$ , in month  $m$  of year  $y$ . Results for the entire cohort, females only and males only are reported in columns 1-3 of table S5a. We find that a 1°C increase in in-utero temperature decreases the size of the birth cohort by 2.6%. The point estimate is larger for males (3.0%) than for females (2.2%). As discussed in the text, changes in cohort size could be driven by survival to adulthood or by pre-birth migration by the household. Lower likelihood of survival to adulthood is likely to downward bias the estimated impacts on earnings, whereas selective migration by wealthier household may lead to an upward bias.

In order to partially test whether this cohort size reduction is likely due to migration, we run a similar regression, but re-define cohorts on the basis of province (a larger administrative unit), rather than the canton, of birth. If most migration is relatively local in nature, for instance, from rural areas to the nearest city, than most migration will be inter-provincial, so that, provincial cohort sizes would be less affected by in-utero weather. Results of the province level

---

<sup>5</sup> These buckets are used after de-trending the weather data by taking the residuals from the regression of the weather data on the province specific time trends, and the fixed effects used in Equation (1).

regressions, reported in table S5b, are very similar to those reported in table S5a, suggesting against inter-provincial migration as the main driver of the results. As discussed in the main text, migration is also inconsistent with the diverging earnings results found for males and females..

Next, we test if in-utero weather affects one's probability of entering the formal sector. We do so in three different ways. In the first, we test if the count of the number of individuals that earned formal sector income in 2010 in each cohort is affected by birth-year weather. Results are reported in table S5c and indicate that hotter in-utero temperatures do tend to reduce the formal sector cohort size. However, the magnitude of the effect is quite similar to the magnitude of the reduction of the total birth cohort size reported in table S5a, suggesting against additional reduction in the proportion of formal sector workers in a cohort. To test this directly, we replace the dependent variable with the ratio of the number of formal sector cohort size to the total cohort size, i.e. the percentage of individuals in each cohort working in the formal sector. The results, reported in table S5d confirm that birth-year weather does not affect selection into the formal sector, as all coefficients are very small and statistically insignificant. Finally, in the last test for selection, we estimate whether the probability of entering the formal sector is affected by early-life weather by estimating a regression parallel to equation (1) in which the sample consists of all individuals in the civil registry, and the dependent variable is a binary indicator of formal sector employment.<sup>6</sup> We do not find any evidence for selection for either males or females (table S5e).

**Falsification Tests.** In our first falsification test, we re-estimate Equation (1) while replacing each individual's in-utero weather exposure with weather occurring during "placebo" 9-month periods generated by displacing the actual in-utero period up to 10 years backwards and forward in time. The resulting estimates are plotted in figure 3 (for temperature) and figure S5 (for precipitation) against the number of years by which weather was displaced in time, so that the coefficients of the actual (non-placebo) regressions are plotted at the zero point on the horizontal axis. We note that this falsification test may be too restrictive, in the sense that "placebo" estimates could still be non-zero, for two reasons. First, serial correlation in weather

---

<sup>6</sup> Note, due to computational restrictions, the regressions are estimated with quadratic province time-trends, rather than the standard quartic time trends.

can create significant correlations between the actual in-utero and placebo weather, and second, it is not implausible that shocks occurring outside of the in-utero period may also affect future earnings. For example, weather shocks occurring before conceptions could still impact household welfare during pregnancy, and post-natal shocks could still be affecting adult outcomes. Nevertheless, one would expect impacts to decline with the level of time displacement. The results, displayed in figure 3, confirm this expectation. All placebo temperature estimates are smaller than the actual one, and other than the first lag and lead, are all statistically insignificant. Figure S5 shows a similar pattern for rainfall, i.e. that only the actual and first lead coefficients statistically significant, with nearly all other point estimates being small in magnitude and statistically insignificant...

In our second falsification test, we repeatedly and randomly “re-shuffle” the weather data across time and space and re-estimate regression (1), in order to test the appropriateness of our statistical model and the likelihood that our results are an artifact of chance or of a systematic error in the data. We conduct three separate such “re-shufflings” (Hsiang and Jina 2014). In the first, we randomly allocate to each birth cohort (individuals born in the same month, year, and canton) the weather values from a different year, but in the same birth month and canton, and then re-estimate Equation (1). We repeat this procedure 10,000 times and plot the distribution of point-estimates (for the impact on in-utero temperature) in figure S6. We find that only 0.52% of these estimates are larger in magnitude (and negative) than the actual coefficient, -0.0109, indicated by the vertical line, implying that it is very unlikely that the estimates we found (table 2) arise by chance. In the second test, we “re-shuffle” weather across space. All individuals born in the same birth cohort are now allocated birth-year weather from their year and month of birth, but from a different canton. Given the granularity of the original weather data, as well as spatial autocorrelation of weather data in general, adjacent cantons may have the same, or very similar weather observations. This increases the likelihood that a birth cohort may be randomly assigned weather data very similar or identical to its actual weather data, making this falsification test highly conservative. Nevertheless, only 0.9% of the estimated coefficients on “in-utero” temperature fall to the left of the actual coefficient. Finally, in the third test, we re-shuffle weather across all cohorts, allocating to each cohort the weather in another, randomly chosen birth month, year, and canton. None of the 10,000 bootstrapped estimates are larger in magnitude than the actual estimate. These results indicate a very low likelihood that our results could have



arisen by chance. Also, as expected, the distributions of the “placebos” estimates are centered around zero, providing a degree of validation to our model specification and the data sets we use.

The parallel results for rainfall are similar but less conclusive. Reshuffling across time, we find that 6.27% of placebo estimates to be larger in magnitude (and positive) than the actual coefficient, 0.001. Reshuffling across space, we find 20.86% of placebo estimates to be larger. However, when reshuffling across both space and time, none of the placebo estimates are larger than the actual estimate.

**Table S1: Income data (2010), summary statistics**

Formal Sector Earnings

|         | Obs       | Mean      | Median    | St. Dev    | Min     | Max         |
|---------|-----------|-----------|-----------|------------|---------|-------------|
| Males   | 1,058,277 | \$6,787.3 | \$4,661.8 | \$6,508.60 | \$84.33 | \$41,136.10 |
| Females | 580,659   | \$6,681.7 | \$4,604.1 | \$6,063.20 | \$84.36 | \$41,135.04 |

**Notes:** Formal sector earnings data is obtained from the Ecuadorian Tax Authority. They indicate earnings for all individuals who earned formal sector income in Ecuador in 2010. Figures are given in US\$. Top 1% of earners are excluded.

**Table S2: Average Monthly Weather**

| Province         | Temperature (°C) |        |        |      |      | Rainfall (cm/month) |        |        |      |       |
|------------------|------------------|--------|--------|------|------|---------------------|--------|--------|------|-------|
|                  | Mean             | Median | St Dev | Min  | Max  | Mean                | Median | St Dev | Min  | Max   |
| Azuay            | 14.2             | 14.1   | 0.85   | 11.4 | 17.1 | 7.88                | 6.31   | 5.07   | 0.08 | 40.37 |
| Bolivar          | 21.1             | 21.2   | 0.95   | 17.8 | 23.6 | 13.18               | 7.23   | 12.88  | 0.0  | 73.27 |
| Carchi           | 17.9             | 17.9   | 0.73   | 15.5 | 20.6 | 13.93               | 13.50  | 4.65   | 4.39 | 35.91 |
| Cañar            | 14.3             | 14.3   | 0.92   | 11.1 | 18.2 | 10.35               | 7.45   | 7.67   | 0.64 | 50.63 |
| Chimborazo       | 11.6             | 11.7   | 0.82   | 8.7  | 13.8 | 7.73                | 6.50   | 5.13   | 0.98 | 51.51 |
| Cotopaxi         | 13.5             | 13.6   | 0.81   | 10.7 | 16.1 | 12.01               | 10.05  | 7.75   | 0.26 | 51.51 |
| El Oro           | 24.4             | 24.4   | 1.14   | 21.2 | 27.8 | 7.94                | 3.80   | 8.61   | 0.04 | 52.16 |
| Esmeraldas       | 24.4             | 24.4   | 0.74   | 21.8 | 27.1 | 18.86               | 16.78  | 9.94   | 1.05 | 57.75 |
| Guayas           | 24.6             | 24.6   | 1.22   | 20.2 | 27.4 | 10.93               | 3.62   | 13.53  | 0.02 | 79.99 |
| Imbabura         | 18.1             | 18.0   | 0.92   | 14.6 | 23.4 | 9.73                | 9.21   | 5.56   | 0.47 | 34.82 |
| Loja             | 20.4             | 20.4   | 1.00   | 17.2 | 23.9 | 7.74                | 4.53   | 7.66   | 0.13 | 50.07 |
| Los Rios         | 24.3             | 24.4   | 1.00   | 20.6 | 27.0 | 15.75               | 8.06   | 16.43  | 0.0  | 88.65 |
| Manabi           | 24.4             | 24.4   | 1.15   | 20.0 | 27.3 | 10.83               | 5.70   | 11.25  | 0.0  | 55.73 |
| Morona Santiago  | 22.7             | 22.7   | 0.89   | 19.6 | 25.0 | 19.55               | 18.84  | 4.90   | 5.13 | 40.34 |
| Napo             | 18.2             | 18.2   | 0.72   | 15.5 | 20.6 | 24.41               | 23.94  | 6.28   | 5.93 | 56.95 |
| Orellana         | 25.3             | 25.3   | 0.81   | 22.3 | 27.9 | 26.04               | 24.73  | 7.40   | 5.26 | 48.23 |
| Pastaza          | 25.6             | 25.7   | 0.78   | 22.6 | 27.8 | 29.27               | 29.04  | 6.23   | 8.55 | 55.21 |
| Pichincha        | 15.2             | 15.2   | 0.70   | 12.1 | 17.5 | 14.36               | 12.69  | 8.83   | 1.03 | 43.30 |
| Santa Elena      | 23.4             | 23.3   | 1.79   | 17.8 | 27.3 | 5.13                | 0.86   | 8.28   | 0.0  | 65.53 |
| Santo Domingo    | 21.6             | 21.6   | 0.96   | 19.1 | 24.4 | 22.57               | 14.56  | 19.48  | 0.04 | 88.08 |
| Sucumbios        | 23.9             | 23.9   | 0.83   | 21.1 | 26.7 | 21.48               | 21.34  | 6.50   | 4.02 | 53.68 |
| Tungurahua       | 12.2             | 12.3   | 0.94   | 8.9  | 14.6 | 12.86               | 12.75  | 4.57   | 1.03 | 39.95 |
| Zamora Chinchipe | 20.9             | 21.0   | 0.92   | 17.8 | 24.1 | 12.30               | 11.11  | 4.86   | 0.84 | 43.14 |

**Notes:** Raw weather data is obtained from Willmott and Matsuura (2001), and is in the form of gridded monthly averages. Province averages are calculated by taking the spatially weighted average of all grids falling within a province. Annual averages are calculated by averaging the average monthly temperature for each month in a given year.

**Table S3a: Effects of birth-year weather on future income, females only**

| Dependent Variable: log earnings (2010)            | (1)  | (2)   | (3)   | (4)   |
|--|--|---|---|---|
| Average Temperature, 9 months before birth (°C)    | -0.0169<br>(0.0045)***<br>(0.0070)**<br>(0.0045)***<br>(0.0048)*** | -0.0130<br>(0.0026)***<br>(0.0035)***<br>(0.0037)***<br>(0.0044)*** | -0.0112<br>(0.0023)***<br>(0.0028)***<br>(0.0035)***<br>(0.0041)*** | -0.0109<br>(0.0024)***<br>(0.0029)***<br>(0.0035)***<br>(0.0041)*** |
| Average Temperature, 9 months after birth (°C)     | -0.0058<br>(0.0044)<br>(0.0050)<br>(0.0040)<br>(0.0038)            | -0.0015<br>(0.0029)<br>(0.0049)<br>(0.0031)<br>(0.0032)             | -0.0007<br>(0.0026)<br>(0.0050)<br>(0.0029)<br>(0.0030)             | -0.0009<br>(0.0025)<br>(0.0046)<br>(0.0029)<br>(0.0031)             |
| Average Rainfall, 9 months before birth (cm/month) | 0.0015<br>(0.0005)***<br>(0.0006)**<br>(0.0008)*<br>(0.0008)*      | 0.0015<br>(0.0006)**<br>(0.0006)**<br>(0.0007)**<br>(0.0007)**      | 0.0010<br>(0.0004)**<br>(0.0005)**<br>(0.0006)<br>(0.0006)*         | 0.0010<br>(0.0004)**<br>(0.0005)**<br>(0.0006)*<br>(0.0005)**       |
| Average Rainfall, 9 months after birth (cm/month)  | 0.0008<br>(0.0006)<br>(0.0005)<br>(0.0006)<br>(0.0006)             | 0.0007<br>(0.0005)<br>(0.0005)<br>(0.0005)<br>(0.0006)              | 0.0003<br>(0.0006)<br>(0.0006)<br>(0.0005)<br>(0.0005)              | 0.0004<br>(0.0006)<br>(0.0006)<br>(0.0005)<br>(0.0005)              |
| Province-Specific Time Trends                      | Linear   | Quadratic   | Cubic   | Quartic   |
| Year Fixed Effects                                 | Y  | Y   | Y   | Y   |
| Month-Canton Fixed Effects                         | Y  | Y   | Y   | Y   |
| Observations                                       | 580,134  | 580,134   | 580,134   | 580,134   |
| R-squared  | 0.1735   | 0.1743  | 0.1746  | 0.1746  |

Notes: Sample includes females born between 1950 and 1989 who earned formal sector income in the year 2010. Each column presents coefficients and four sets of standard errors from a separate regression estimated using OLS. Standard errors in parentheses are, in order from top to bottom: clustered at the province level, clustered at canton level, clustered at province/year level, and clustered at region/year level. Stars indicate confidence levels: \* p<0.1, \*\* p<0.05, \*\*\* p<0.01

**Table S3b: Effects of birth-year weather on future income, males only**

| Dependent Variable: log earnings (2010)            | (1)   | (2)  | (3)  | (4)   |
|--|---|--|--|---|
| Average Temperature, 9 months before birth (°C)    | -0.0111<br>(0.0075)<br>(0.0078)<br>(0.0042)***<br>(0.0039)*** | -0.0060<br>(0.0038)<br>(0.0035)*<br>(0.0026)**<br>(0.0029)** | -0.0040<br>(0.0032)<br>(0.0028)<br>(0.0023)*<br>(0.0027) | -0.0037<br>(0.0032)<br>(0.0028)<br>(0.0023)<br>(0.0026) |
| Average Temperature, 9 months after birth (°C)     | -0.0102<br>(0.0060)<br>(0.0051)**<br>(0.0047)**<br>(0.0045)** | -0.0051<br>(0.0031)<br>(0.0030)*<br>(0.0031)*<br>(0.0033)    | -0.0036<br>(0.0026)<br>(0.0036)<br>(0.0028)<br>(0.0030)  | -0.0035<br>(0.0026)<br>(0.0029)<br>(0.0029)<br>(0.0030) |
| Average Rainfall, 9 months before birth (cm/month) | -0.0001<br>(0.0005)<br>(0.0005)<br>(0.0006)<br>(0.0007)       | -0.0002<br>(0.0005)<br>(0.0004)<br>(0.0005)<br>(0.0005)      | -0.0005<br>(0.0005)<br>(0.0004)<br>(0.0004)<br>(0.0004)  | -0.0004<br>(0.0004)<br>(0.0004)<br>(0.0004)<br>(0.0004) |
| Average Rainfall, 9 months after birth (cm/month)  | 0.0007<br>(0.0006)<br>(0.0006)<br>(0.0006)<br>(0.0007)        | 0.0006<br>(0.0005)<br>(0.0006)<br>(0.0005)<br>(0.0006)       | 0.0003<br>(0.0004)<br>(0.0006)<br>(0.0005)<br>(0.0005)   | 0.0004<br>(0.0004)<br>(0.0006)<br>(0.0005)<br>(0.0005)  |
| Province-Specific Time Trends                      | Linear  | Quadratic  | Cubic  | Quartic   |
| Year Fixed Effects                                 | Y   | Y  | Y  | Y   |
| Month-Canton Fixed Effects                         | Y   | Y  | Y  | Y   |
| Observations                                       | 1,057,446   | 1,057,446  | 1,057,446  | 1,057,446   |
| R-squared  | 0.1421  | 0.1430   | 0.1431   | 0.1432  |

Notes: Sample includes males born between 1950 and 1989 who earned formal sector income in the year 2010. Each column presents coefficients and four sets of standard errors from a separate regression estimated using OLS. Standard errors in parentheses are, in order from top to bottom: clustered at the province level, clustered at canton level, clustered at province/year level, and clustered at region/year level. Stars indicate confidence levels: \*  $p < 0.1$ , \*\*  $p < 0.05$ , \*\*\*  $p < 0.01$

**Table S4a: Summary Statistics: Educational Attainment**

| Educational Attainment     | Percent completed, females | Percent completed, males | Average Income, females | Average Income, males |
|----------------------------|----------------------------|--------------------------|-------------------------|-----------------------|
| Less than Secondary School | 16.25%                     | 33.70%                   | \$3,225                 | \$3,999               |
| At least Secondary School  | 83.75%                     | 66.30%                   | \$7,352                 | \$8,204               |
| At least College           | 29.43%                     | 15.81%                   | \$9,832                 | \$12,316              |

Notes: Sample includes females born between 1950 and 1989 who earned formal sector income in the year 2010. Educational attainment data is obtained from the National Civil Registry and is merged with earnings data from the Ecuadorian tax authority. Data is from 2010.

**Table S4b: Effect of birth-year weather on Secondary School Completion, females only**

| Dependent Variable: =1 if highest educational attainment at least secondary school | (1)                 | (2)                 | (3)                  | (4)                 |
|--|---------------------|---------------------|----------------------|---------------------|
| Average Temperature, 9 months before birth (°C)                                    | -0.0019<br>(0.0025) | -0.0017<br>(0.0018) | -0.0014<br>(0.0015)  | -0.0015<br>(0.0016) |
| Average Temperature, 9 months after birth (°C)                                     | -0.0011<br>(0.0010) | -0.0013<br>(0.0009) | -0.0011<br>(0.0009)  | -0.0012<br>(0.0008) |
| Average Rainfall, 9 months before birth (cm/month)                                 | 0.0002<br>(0.0003)  | 0.0002<br>(0.0003)  | -0.00004<br>(0.0003) | 0.00005<br>(0.0003) |
| Average Rainfall, 9 months after birth (cm/month)                                  | 0.0004<br>(0.0002)  | 0.0004*<br>(0.0002) | 0.0003<br>(0.0002)   | 0.0004<br>(0.0002)  |
| Province-Specific Time Trends  | Linear              | Quadratic           | Cubic                | Quartic             |
| Year Fixed Effects   | Y                   | Y                   | Y                    | Y                   |
| Month-Canton Fixed Effects   | Y                   | Y                   | Y                    | Y                   |
| Observations   | 580,134             | 580,134             | 580,134              | 580,134             |
| R-squared  | 0.0910              | 0.0924              | 0.0928               | 0.0930              |

Notes: Sample includes females born between 1950 and 1989 who earned formal sector income in the year 2010. Each column presents coefficients (standard errors) from a separate regression estimated using OLS. Standard errors in parentheses are clustered at the province level. Stars indicate confidence levels: \* p<0.1, \*\* p<0.05, \*\*\* p<0.01

**Table S4c: Effect of birth-year weather on College Completion, females only**

| Dependent Variable: =1 if highest educational attainment at least college | (1)                  | (2)                   | (3)                   | (4)                  |
|---|----------------------|-----------------------|-----------------------|----------------------|
| Average Temperature, 9 months before birth (°C)                           | -0.0059<br>(0.0043)  | -0.0047*<br>(0.0023)  | -0.0034<br>(0.0023)   | -0.0033<br>(0.0023)  |
| Average Temperature, 9 months after birth (°C)                            | -0.0046<br>(0.0028)  | -0.0036**<br>(0.0016) | -0.0020*<br>(0.0011)  | -0.0017*<br>(0.0010) |
| Average Rainfall, 9 months before birth (cm/month)                        | 0.0008**<br>(0.0003) | 0.0008***<br>(0.0003) | 0.0006***<br>(0.0002) | 0.0005**<br>(0.0002) |
| Average Rainfall, 9 months after birth (cm/month)                         | 0.0007*<br>(0.0004)  | 0.0008**<br>(0.0003)  | 0.0007**<br>(0.0003)  | 0.0006**<br>(0.0002) |
| Province-Specific Time Trends   | Linear               | Quadratic             | Cubic                 | Quartic              |
| Year Fixed Effects  | Y                    | Y                     | Y                     | Y                    |
| Month-Canton Fixed Effects  | Y                    | Y                     | Y                     | Y                    |
| Observations  | 580,134              | 580,134               | 580,134               | 580,134              |
| R-squared   | 0.0798               | 0.0796                | 0.0805                | 0.0806               |

Notes: Sample includes females born between 1950 and 1989 who earned formal sector income in the year 2010. Each column presents coefficients (standard errors) from a separate regression estimated using OLS. Standard errors in parentheses are clustered at the province level. Stars indicate confidence levels: \* p<0.1, \*\* p<0.05, \*\*\* p<0.01



**Table S5a: Effect of birth-year weather on birth cohort size, canton level**

| Dependent Variable:<br>(Log) number of individuals born in each<br>month, year, and canton cohort | (1)<br>Full Sample    | (2)<br>Females Only    | (3)<br>Males Only     |
|---|-----------------------|------------------------|-----------------------|
| Average Temperature,<br>9 months before birth (°C)  | -0.0264**<br>(0.0121) | -0.0221*<br>(0.0119)   | -0.0300**<br>(0.0110) |
| Average Temperature,<br>9 months after birth (°C)   | -0.0154<br>(0.0110)   | -0.0162<br>(0.00987)   | -0.0103<br>(0.0113)   |
| Average Rainfall,<br>9 months before birth (cm/month)   | -0.00109<br>(0.00142) | -0.000901<br>(0.00134) | -0.00134<br>(0.00153) |
| Average Rainfall,<br>9 months after birth (cm/month)  | -0.00144<br>(0.00127) | -0.00155<br>(0.00133)  | -0.00120<br>(0.00113) |
| Province-Specific Time Trends   | Quartic               | Quartic                | Quartic               |
| Year Fixed Effects  | Y                     | Y                      | Y                     |
| Month-Canton Fixed Effects  | Y                     | Y                      | Y                     |
| Observations  | 67,157                | 65,994                 | 65,799                |
| R-Squared   | 0.912                 | 0.904                  | 0.903                 |

Notes: Sample includes individuals born between 1950 and 1989 who were in the Ecuadorian civil registry in 2010. Each column presents coefficients (standard errors) from a separate regression estimated using OLS. Standard errors in parentheses are clustered at the province level. Column (1) includes the full population, while columns (2) and (3) only include females and males, respectively. Each observation is a month, year, and canton cohort in which at least one individual in the civil registry was born. Stars indicate confidence levels: \*  $p < 0.1$ , \*\*  $p < 0.05$ , \*\*\*  $p < 0.01$

**Table S5b: Effect of birth-year weather on birth cohort size, province level**

| Dependent Variable:<br>(Log) Number of individuals born in each<br>month, year, and province cohort | (1)<br>Full Sample    | (2)<br>Females Only    | (3)<br>Males Only     |
|---|-----------------------|------------------------|-----------------------|
| Average Temperature,<br>9 months before birth (°C)  | -0.0188***<br>(0.005) | -0.0152**<br>(0.007)   | -0.0221***<br>(0.007) |
| Average Rainfall,<br>9 months before birth (cm/month)   | 0.00812<br>(0.007)    | 0.000833<br>(0.009)    | 0.0145**<br>(0.006)   |
| Average Temperature,<br>9 months before birth (°C)  | -0.00140*<br>(0.001)  | -0.00207***<br>(0.001) | -0.000982<br>(0.001)  |
| Average Rainfall,<br>9 months before birth (cm/month)   | -0.00261**<br>(0.001) | -0.00214**<br>(0.001)  | -0.00295**<br>(0.001) |
| Province-Specific Time Trends   | Quartic               | Quartic                | Quartic               |
| Year Fixed Effects  | Y                     | Y                      | Y                     |
| Month-Canton Fixed Effects  | Y                     | Y                      | Y                     |
| Observations  | 11318                 | 11312                  | 11310                 |
| R-Squared   | 0.992                 | 0.988                  | 0.986                 |

Notes: Sample includes individuals born between 1950 and 1989 who were in the Ecuadorian civil registry in 2010. Each column presents coefficients (standard errors) from a separate regression estimated using OLS. Standard errors in parentheses are clustered at the province level. Column (1) includes the full population, while columns (2) and (3) only include females and males, respectively. Each observation is a month, year, and province cohort in which at least one individual in the civil registry was born. Stars indicate confidence levels: \*  $p < 0.1$ , \*\*  $p < 0.05$ , \*\*\*  $p < 0.01$

**Table S5c: Effect of birth-year weather on formal sector cohort size**

| Dependent Variable: (Log) Number of individuals earning formal sector income in 2010 that were born in each month, year, and canton cohort | (1)<br>Full Sample  | (2)<br>Females Only | (3)<br>Males Only   |
|--|---------------------|---------------------|---------------------|
| Average Temperature, 9 months before birth (°C)  | -0.027**<br>(0.011) | -0.021**<br>(0.009) | -0.027**<br>(0.011) |
| Average Temperature, 9 months after birth (°C)   | -0.0082<br>(0.007)  | -0.003<br>(0.005)   | -0.003<br>(0.007)   |
| Average Rainfall, 9 months before birth (cm/month)   | -0.002<br>(0.001)   | -0.002<br>(0.001)   | -0.001<br>(0.001)   |
| Average Rainfall, 9 months after birth (cm/month)  | -0.0003<br>(0.001)  | -0.0006<br>(0.009)  | -0.0004<br>(0.001)  |
| Province-Specific Time Trends  | Quartic             | Quartic             | Quartic             |
| Year Fixed Effects   | Y                   | Y                   | Y                   |
| Month-Canton Fixed Effects   | Y                   | Y                   | Y                   |
| Observations   | 60,090              | 48,996              | 57,126              |
| R-Squared  | 0.894               | 0.858               | 0.878               |

Notes: Sample includes individuals born between 1950 and 1989 who earned formal sector income in the year 2010. Each column presents coefficients (standard errors) from a separate regression estimated using OLS. Standard errors in parentheses are clustered at the province level. Column (1) includes the full population, while columns (2) and (3) only include females and males, respectively. Each observation is a month, year, and canton cohort in which at least one individual that earned 2010 formal sector income was born. Stars indicate confidence levels: \* p<0.1, \*\* p<0.05, \*\*\* p<0.01

**Table S5d: Effect of birth-year weather on formal sector cohort to birth cohort ratio**

| Dependent Variable: Ratio of formal sector cohort size and birth cohort size | (1)<br>Full Sample  | (2)<br>Females Only   | (3)<br>Males Only   |
|--|---------------------|-----------------------|---------------------|
| Average Temperature,<br>9 months before birth (°C)                           | -0.0011<br>(0.0013) | -0.00005<br>(0.00110) | -0.002<br>(0.0021)  |
| Average Temperature,<br>9 months after birth (°C)                            | -0.0011<br>(0.001)  | -0.0012<br>(0.0013)   | -0.0017<br>(0.0016) |
| Average Rainfall,<br>9 months before birth (cm/month)                        | 0.0002<br>(0.0002)  | -0.00002<br>(0.0002)  | 0.0003<br>(0.0003)  |
| Average Rainfall,<br>9 months after birth (cm/month)                         | 0.0003*<br>(0.0002) | 0.0001<br>(0.0001)    | 0.0003<br>(0.0002)  |
| Province-Specific Time Trends  | Quartic             | Quartic               | Quartic             |
| Year Fixed Effects   | Y                   | Y                     | Y                   |
| Month-Canton Fixed Effects   | Y                   | Y                     | Y                   |
| Observations   | 67,157              | 65,994                | 65,799              |
| R-Squared  | 0.285               | 0.194                 | 0.256               |

Notes: Sample includes individuals born between 1950 and 1989 who earned formal sector income in the year 2010. Each column presents coefficients (standard errors) from a separate regression estimated using OLS. Standard errors in parentheses are clustered at the province level. Column (1) includes the full population, while columns (2) and (3) only include females and males, respectively. Each observation is a month, year, and canton cohort in which at least one individual in the civil registry was born. Stars indicate confidence levels: \* p<0.1, \*\* p<0.05, \*\*\* p<0.01

**Table S5e: Effect of birth-year weather on formal sector selection**

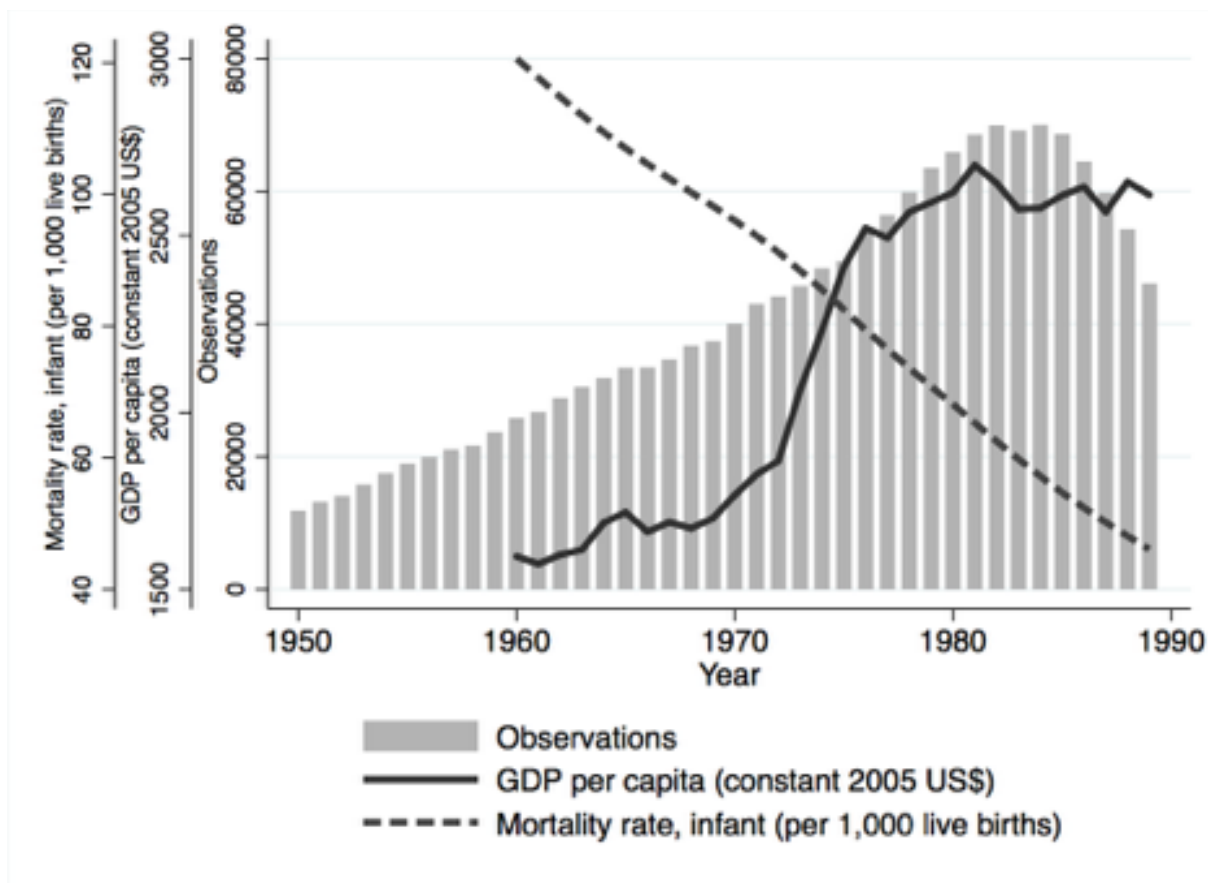
| Dependent Variable:<br>=1 if earned formal sector income, 2010 | (1)<br>Full Population  | (2)<br>Females Only     | (3)<br>Males Only       |
|--|-------------------------|-------------------------|-------------------------|
| Average Temperature,<br>9 months before birth (°C)             | -0.00059<br>(0.00055)   | -0.00065<br>(0.00055)   | -0.00055<br>(0.00085)   |
| Average Temperature,<br>9 months after birth (°C)              | 0.000148<br>(0.000615)  | 0.000839<br>(0.000879)  | -0.000629<br>(0.000481) |
| Average Rainfall,<br>9 months before birth (cm/month)          | 0.000158<br>(0.000104)  | 0.000109<br>(0.000093)  | 0.000203<br>(0.000128)  |
| Average Rainfall,<br>9 months after birth (cm/month)           | 0.000171*<br>(0.000085) | 0.000166*<br>(0.000082) | 0.000162<br>(0.000118)  |
| Province-Specific Time Trends                                  | Quadratic               | Quadratic               | Quadratic               |
| Year Fixed Effects   | Y                       | Y                       | Y                       |
| Month-Province Fixed Effects                                   | Y                       | Y                       | Y                       |
| Observations   | 8,159,284               | 4,078,650               | 4,080,634               |
| R-squared  | 0.034                   | 0.04                    | 0.037                   |

Notes: Sample includes individuals born between 1950 and 1989 who were registered with the Ecuadorian Civil Registry in 2010. Each column presents coefficients (standard errors) from a separate regression estimated using OLS. Standard errors in parentheses are clustered at the province level. Column (1) includes the full population, while columns (2) and (3) only include females and males, respectively. Each observation is an individual who was registered with the Ecuadorian Civil Registry in 2010. The dependent variable is equal to 1 if the individual earned any formal sector income in 2010, and 0 otherwise. Stars indicate confidence levels: \*  $p < 0.1$ , \*\*  $p < 0.05$ , \*\*\*  $p < 0.01$

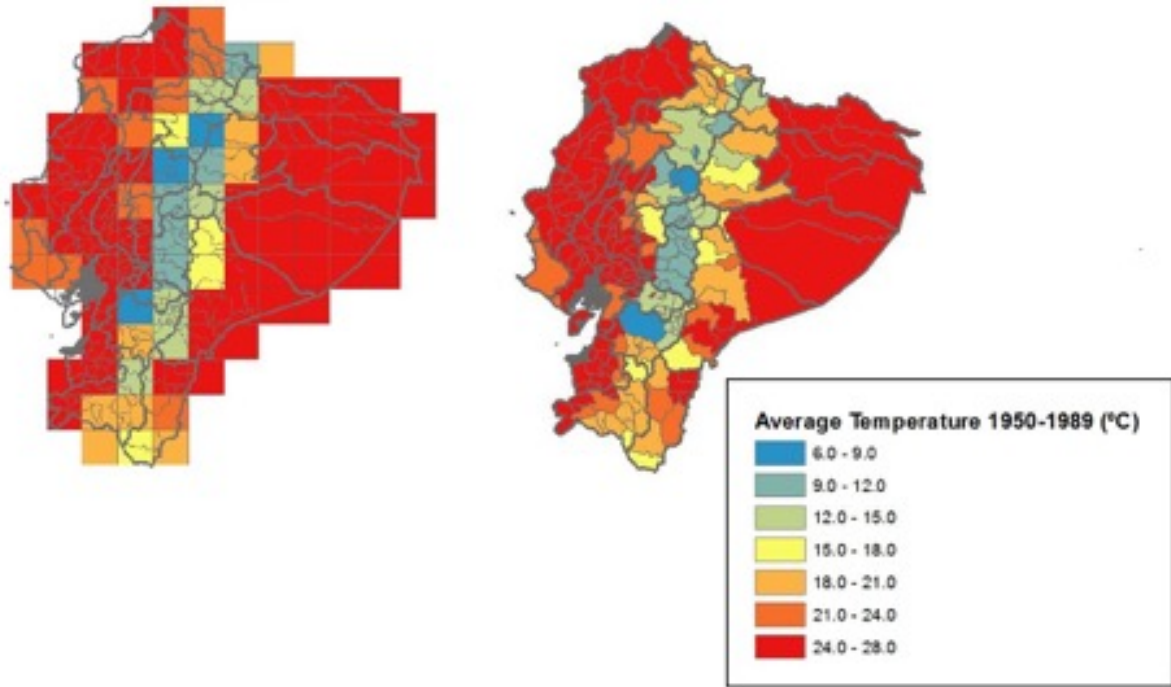
**Table S6: Heterogenous Impacts by Urbanization Status**

| Dependent Variable: log earnings (2010)                           | (1)                     | (2)                     | (3)                    | (4)                    |
|---|-------------------------|-------------------------|------------------------|------------------------|
| Average Temperature,<br>9 months before birth                     | -0.0131<br>(0.00786)    | -0.0129**<br>(0.00618)  | -0.0116**<br>(0.00541) | -0.0101*<br>(0.00505)  |
| Average Temperature,<br>9 months before birth X Urbanization Rate | -0.00710<br>(0.0101)    | 0.0000259<br>(0.00852)  | 0.00109<br>(0.00760)   | -0.00131<br>(0.00729)  |
| Average Temperature,<br>9 months after birth                      | -0.00448<br>(0.00993)   | -0.00620<br>(0.00806)   | -0.00500<br>(0.00791)  | -0.00313<br>(0.00755)  |
| Average Temperature,<br>9 months after birth X Urbanization Rate  | -0.00256<br>(0.0127)    | 0.00865<br>(0.0102)     | 0.00797<br>(0.0103)    | 0.00418<br>(0.0101)    |
| Average Rainfall,<br>9 months before birth                        | 0.00195**<br>(0.000924) | 0.00226**<br>(0.000991) | 0.00235**<br>(0.00104) | 0.00237**<br>(0.00105) |
| Average Rainfall,<br>9 months before birth X Urbanization Rate    | -0.000661<br>(0.00111)  | -0.00132<br>(0.00123)   | -0.00229*<br>(0.00119) | -0.00216*<br>(0.00119) |
| Average Rainfall,<br>9 months after birth                         | -0.00218<br>(0.00129)   | -0.00126<br>(0.00117)   | -0.000822<br>(0.00121) | -0.000860<br>(0.00121) |
| Average Rainfall,<br>9 months after birth X Urbanization Rate     | 0.00491***<br>(0.00174) | 0.00309*<br>(0.00157)   | 0.00180<br>(0.00186)   | 0.00208<br>(0.00182)   |
| Province-Specific Time Trends                                     | Quartic                 | Quartic                 | Quartic                | Quartic                |
| Year Fixed Effects  | Y                       | Y                       | Y                      | Y                      |
| Month-Canton Fixed Effects  | Y                       | Y                       | Y                      | Y                      |
| Observations  | 570,941                 | 570,941                 | 570,941                | 570,941                |
| R-squared   | 0.173                   | 0.174                   | 0.175                  | 0.175                  |

Notes: Sample includes females born between 1950 and 1989 who were registered with the Ecuadorian Civil Registry in 2010. Each column presents coefficients (standard errors) from a separate regression estimated using OLS. Standard errors in parentheses are clustered at the province level. Stars indicate confidence levels: \* p<0.1, \*\* p<0.05, \*\*\* p<0.01

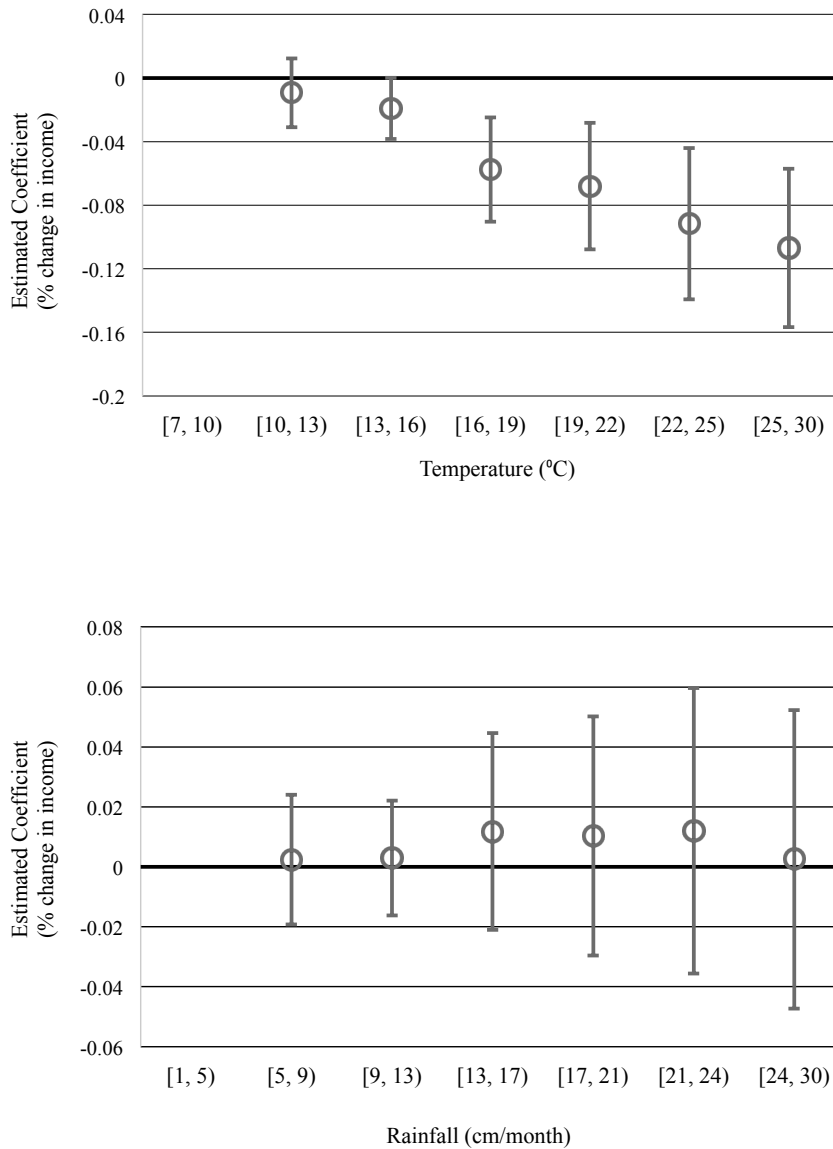


**Figure S1: Economic growth and infant mortality rate during sample birth period.** Bars (inner left axis) indicate the number of individuals in the sample that were born in each year. GDP per capita (center left axis, solid line), and infant mortality rate (outer left axis, dotted line) are also plotted (source: World Bank Development Indicators).

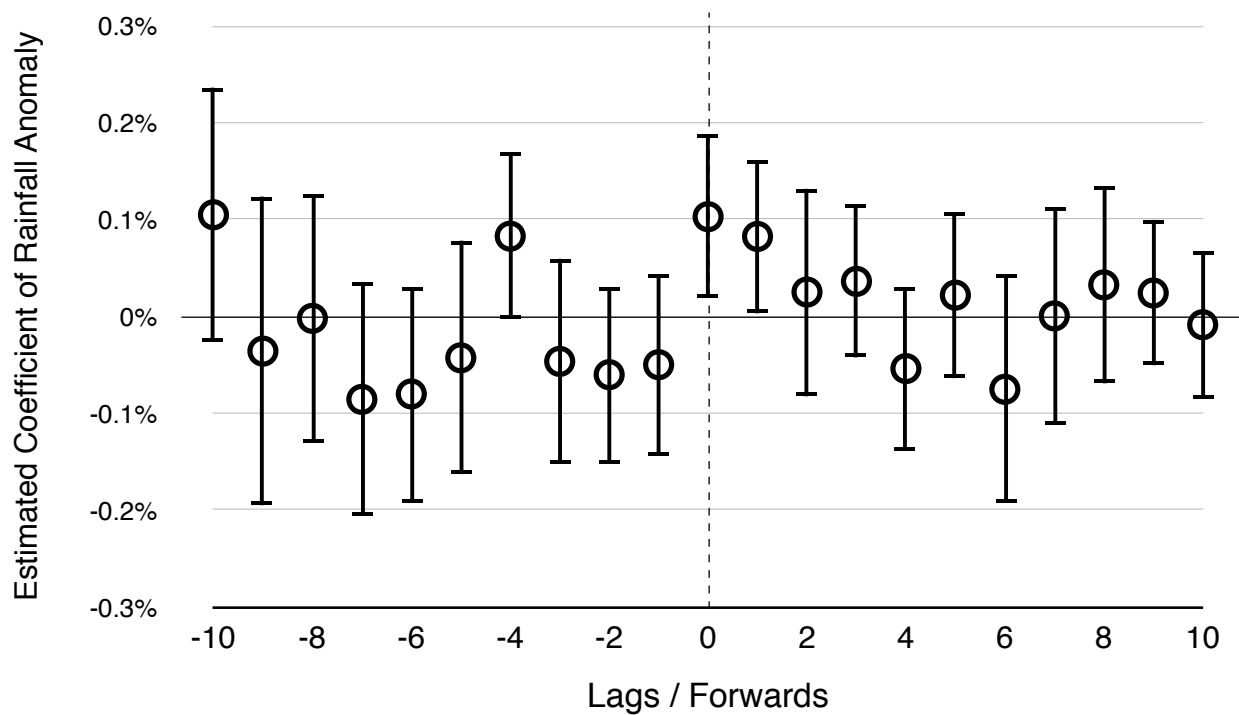


**Figure S2** : An overlay of average temperature (1950-1989) calculated from the gridded weather data of Willmott and Matsuura (2001) on a map of Ecuador’s administrative boundaries. The left panel displays average temperatures from the raw gridded data and the right panel displays the result of spatial averaging of the gridded data within each administrative unit (canton).

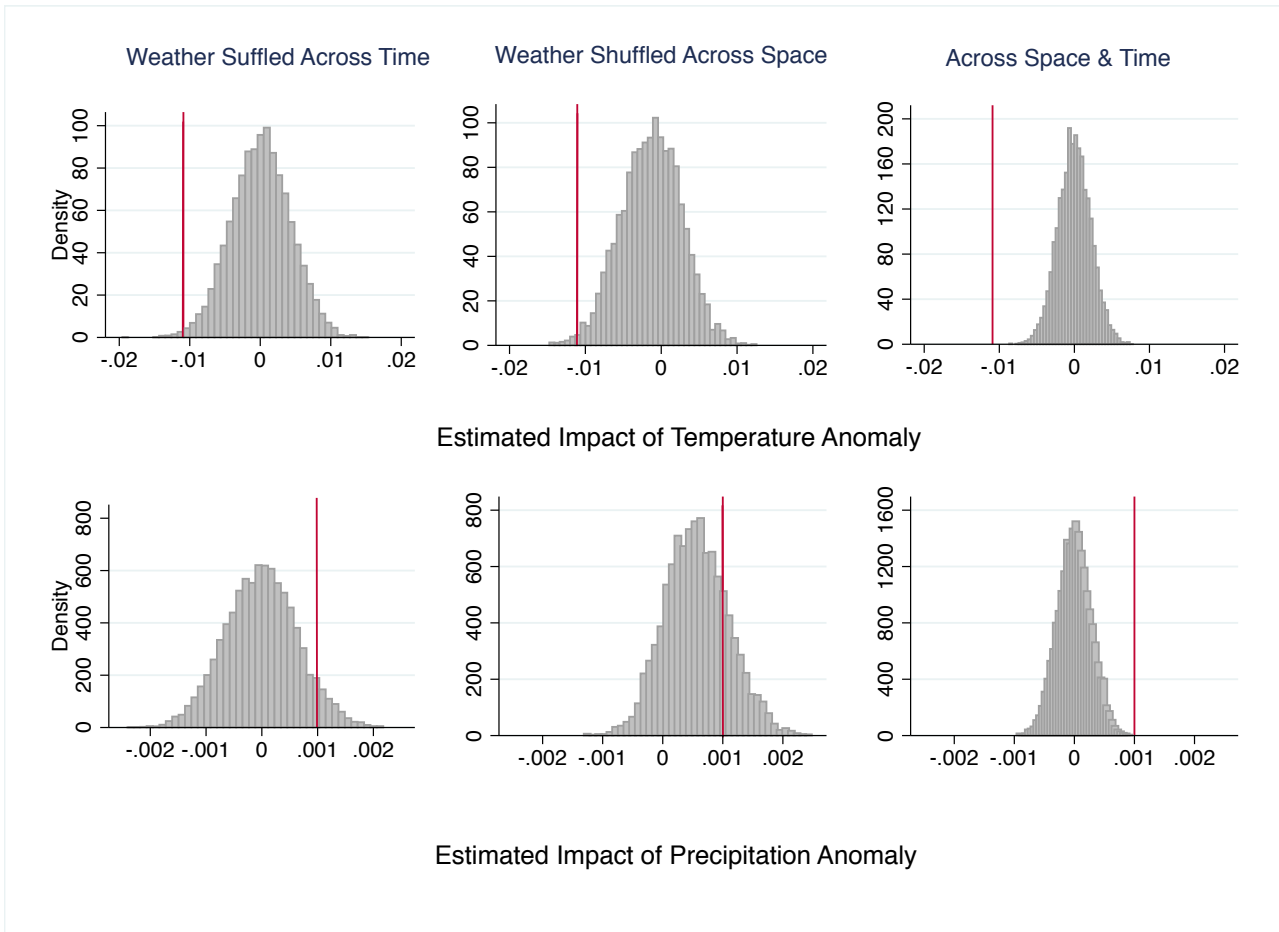




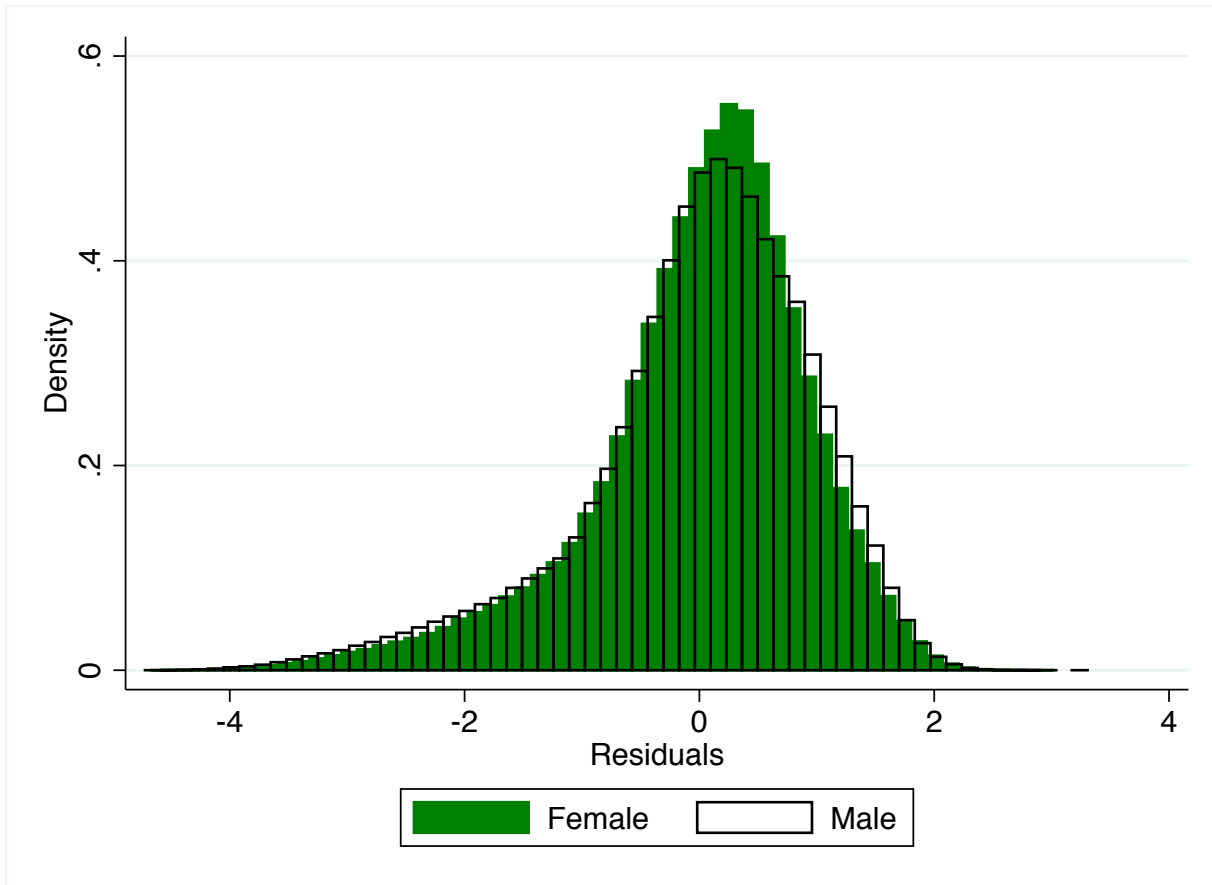
**Figure S3: Semi-parametric estimates of the weather-earning relationship.** The graph reports coefficients from a regression of log earnings (2010, females only) similar to model (1) except that linear expressions in rainfall and temperatures are replaced with a group of binary indicators for whether temperature and precipitation fall in specific ranges indicated in the horizontal axis. Temperature coefficients are displayed in the top panel and rainfall coefficients are displayed in the bottom panel. Error bars indicate 95% confidence intervals.



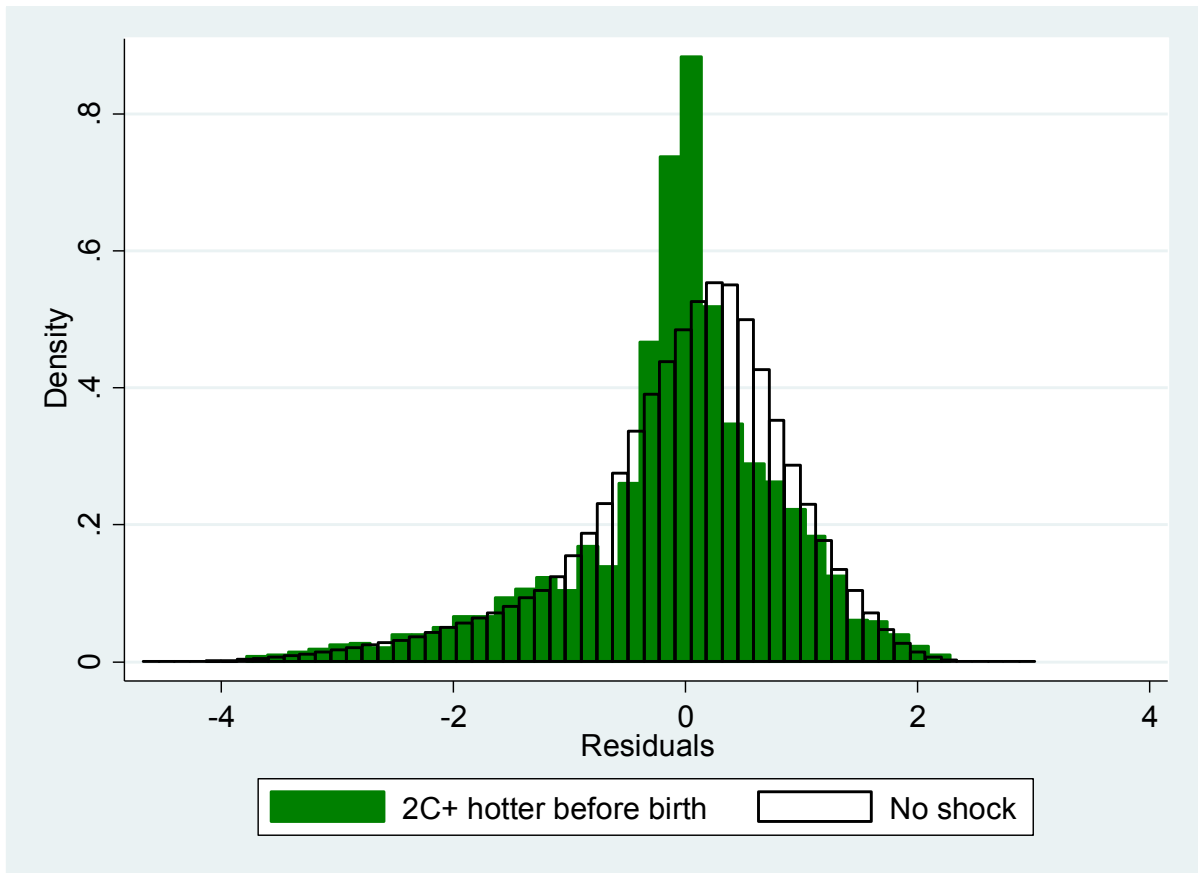
**Figure S4:** Estimated coefficients from variants of regression (1) for females, in which the period of rainfall exposure is shifted by -10 to 10 years (horizontal axis) from the real in-utero period. Each marker’s vertical position therefore measures the estimated impact of 1 cm/month higher average rainfall at the appropriate period of exposure. For example, the marker at the dotted line (no lag) represents the impact of actual in-utero temperatures discussed in the text. Other markers represent the impact of “placebo” rainfall exposures. Error bars represent 95% confidence intervals.



**Figure S5: Falsification Tests.** Each histograms displays the distributions of estimates of in-utero temperature (top panels) and rainfall (bottom panels) coefficients from 10,000 regressions, each of which is parallel to model (1) except that weather data is randomly “re-shuffled” across time (left panels), administrative units (middle panels) or both (right panels). Red lines indicate the magnitude of the same coefficient as estimated from regression (1), i.e. when in-utero temperature and rainfall exposure are at their “actual” levels.



**Figure S6:** Histograms representing the distribution of (log) earnings (residuals from regressions on all controls included in equation 1 other than weather variables) of males (transparent bars) and females (green shaded bars).



**Figure S7: Shifts in the distribution of earnings.** Histograms representing the distributions of (Log) earnings (residuals of regressions which include all controls in equation 1 except for the weather variables) for females, for cohorts experiencing low (between  $-0.5$  and  $+0.5$   $^{\circ}\text{C}$ , empty bars) and high (above  $2^{\circ}\text{C}$ , green bars) in-utero temperature anomalies.