

U.S. Population Projections: 2012 to 2060

Jennifer M. Ortman
Population Division

Presentation for the FFC/GW
Brown Bag Seminar Series on Forecasting

Washington, DC
February 7, 2013



U.S. Department of Commerce
Economics and Statistics Administration
U.S. CENSUS BUREAU

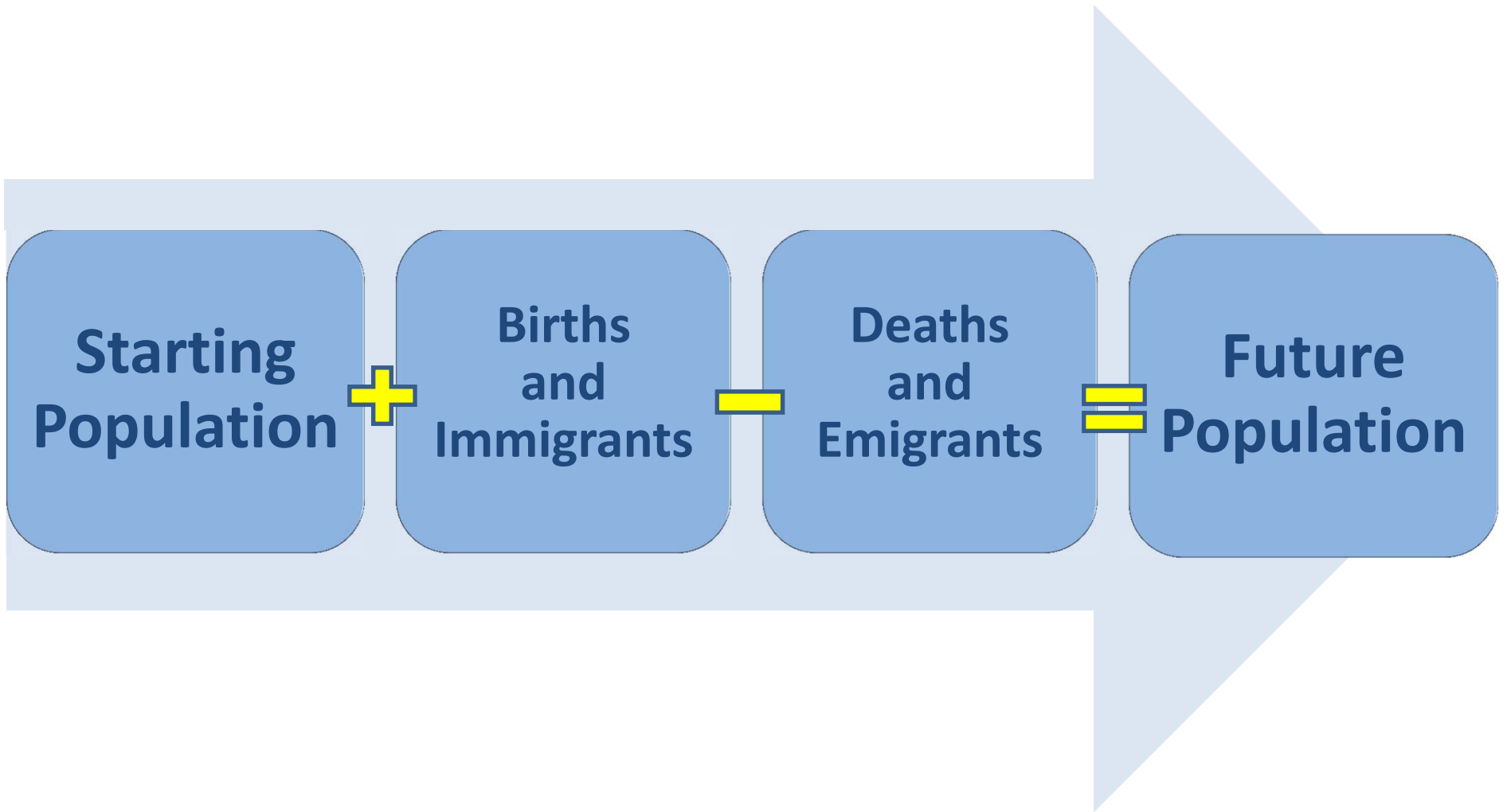
2012 National Projections

- First series based on the 2010 Census
- Projections of the U.S. population by age, sex, race, and Hispanic origin
- Covers the period from 2012 to 2060

Overview

- Methodology and assumptions
 - Mortality
 - Fertility
 - Net International Migration
- Highlights from the results

Making Population Projections



Mortality Projections

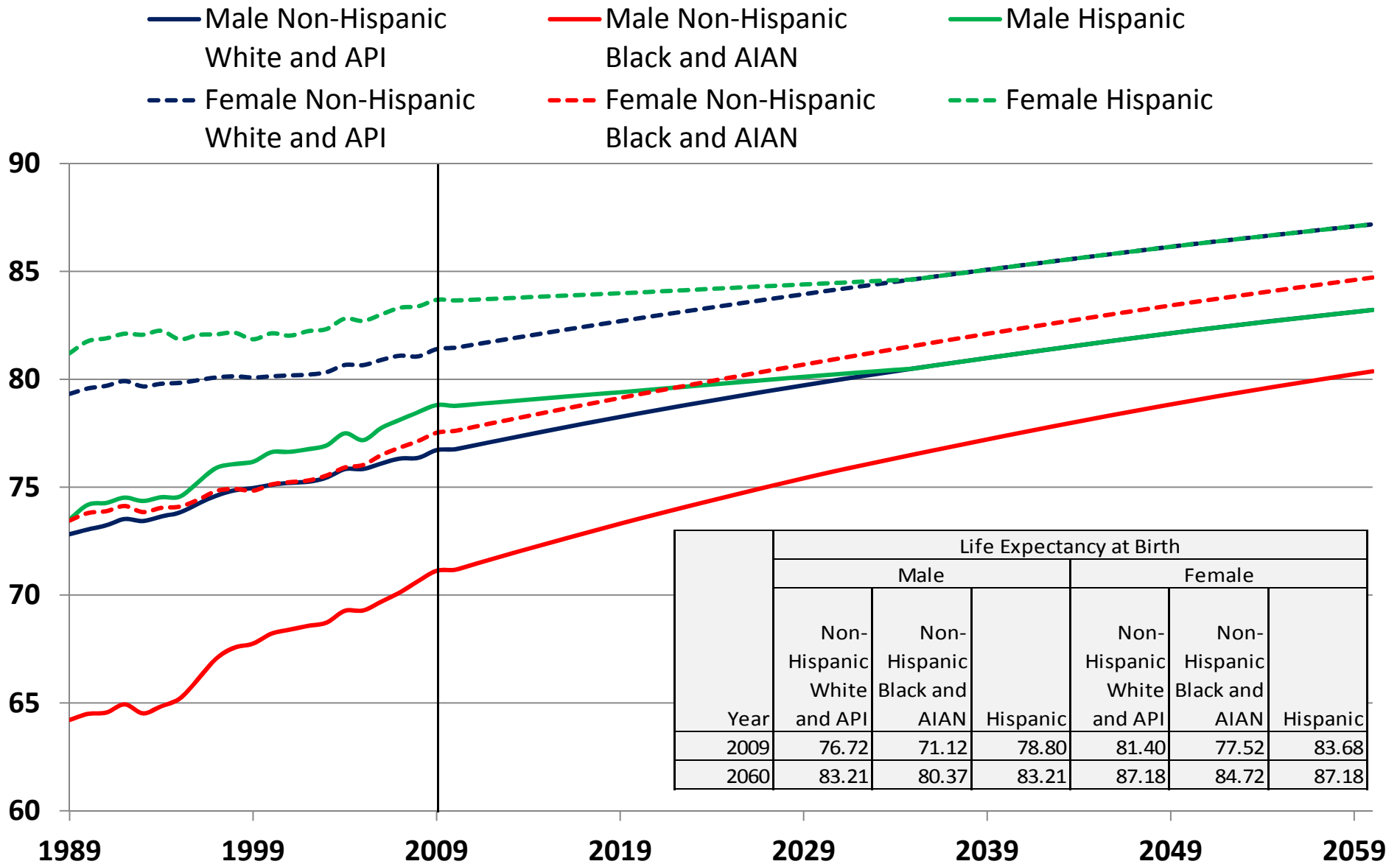
- One series of mortality projections
- Three race and Hispanic origin groups
 - Non-Hispanic White and Asian or Pacific Islander (API)
 - Non-Hispanic Black and American Indian or Alaska Native (AIAN)
 - Hispanic

Note: The superseded Asian and Pacific Islander combined category is used due to the lack of historical data for the current categories of: (1) Asian and (2) Native Hawaiian and Other Pacific Islander.

Mortality Projection Methodology

- Life expectancy at birth is projected for each group to 2060
 - Hispanic life expectancy is projected to converge to the rate projected for the non-Hispanic White and API population in 2035
- Use Coale-Demeny West model life table to convert life expectancy projections to age-specific mortality rates

Life Expectancy at Birth by Sex, Race, and Hispanic Origin: 1989 to 2060



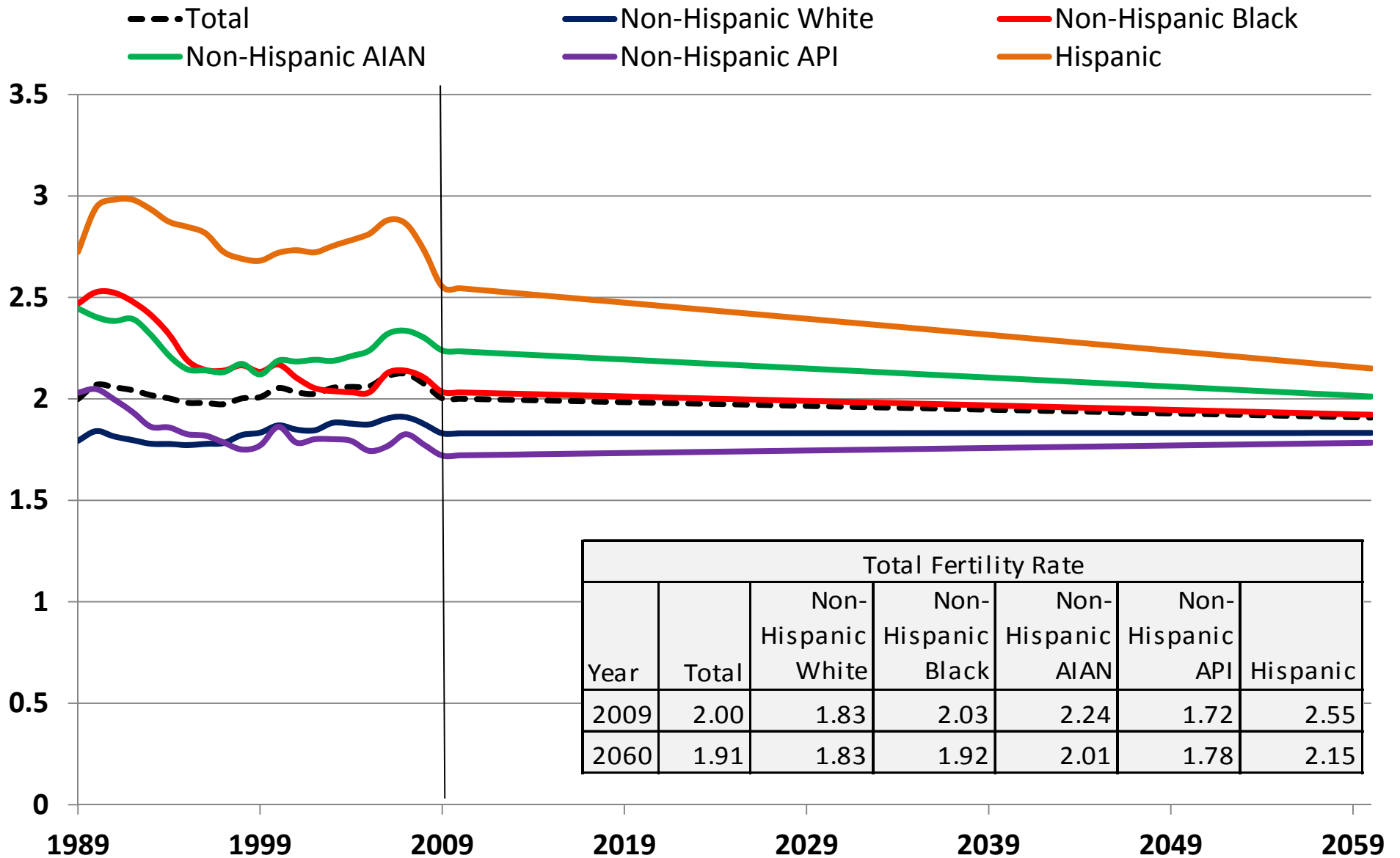
Fertility Projections

- One series of fertility projections
- Rates for women aged 10 to 54 years
- Five race and Hispanic origin groups
 - Non-Hispanic
 - White
 - Black
 - American Indian or Alaska Native (AIAN)
 - Asian or Pacific Islander (API)
 - Hispanic

Fertility Projection Methodology

- Average the age-specific fertility rates (ASFR) of non-Hispanic White females for 1989-2009
- Assume the ASFRs of all five groups will converge to the average of the ASFRs for the non-Hispanic White group in 2100

Total Fertility Rates by Race and Hispanic Origin: 1989 to 2060



Net International Migration Projections

- Foreign-born immigration (+)
- Foreign-born emigration (-)
- Net native-born migration (+)

Foreign-Born Immigration Projections

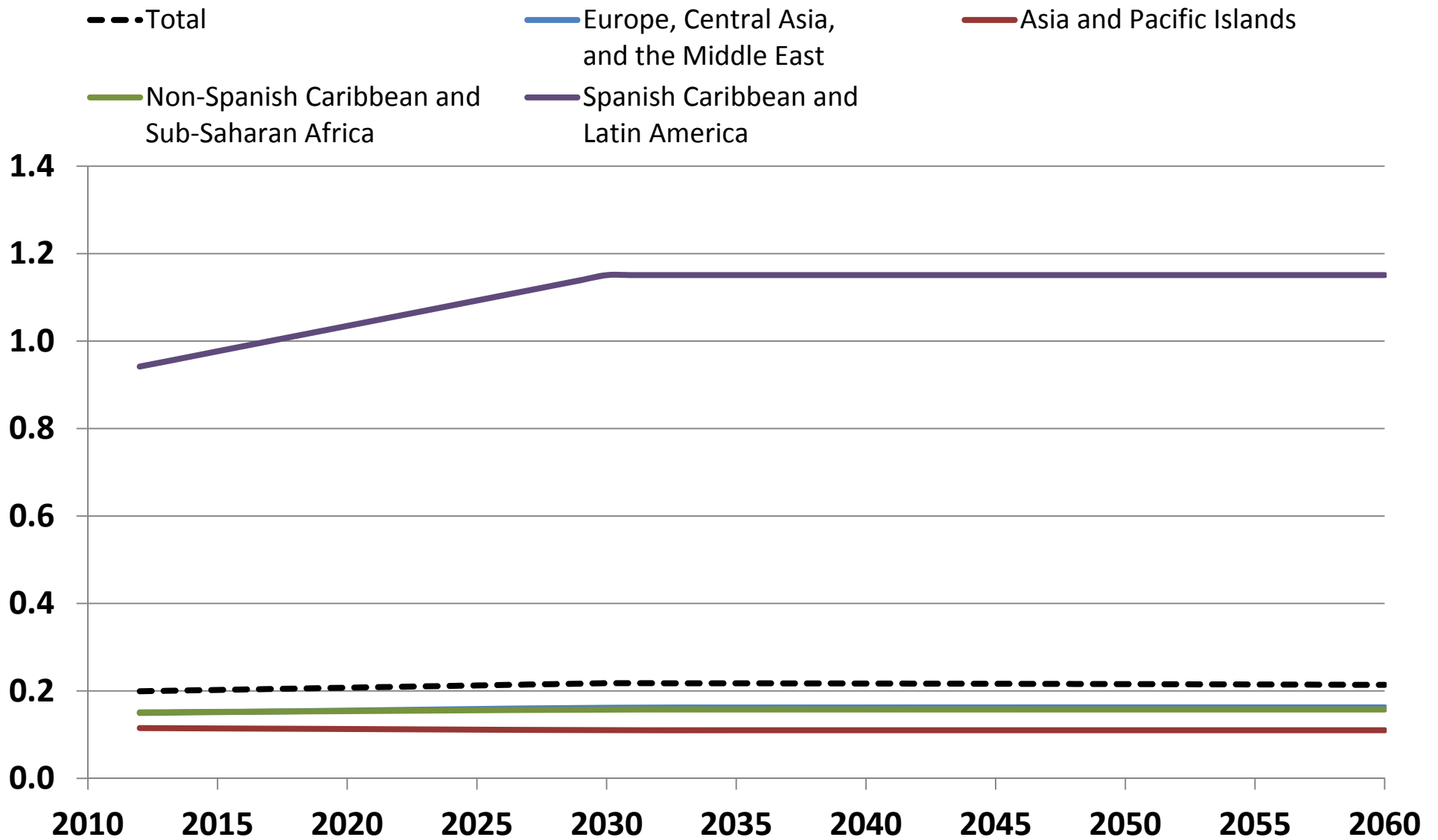
- Projected as a rate of emigration from sending countries
- Rates calculated for years 1980-2010

$$\text{Emigration Rate} = \frac{\text{Immigrants to United States}}{\text{Sending Country Population}}$$

- Rates are projected to move toward an ultimate rate

Projected Rates of Emigration from Sending Countries to the United States: 2012 to 2060

(Migrants per 1,000 population)



Calculating Projected Foreign-Born Immigrants

- Projected immigrants to the United States were calculated for each year by multiplying the projected emigration rate from sending countries by the projected population within each region.

$$\begin{array}{ccccc} \text{Projected} & & \text{Projected} & * & \text{Projected} \\ \text{U.S.} & = & \text{Emigration} & & \text{Sending} \\ \text{Immigrants} & & \text{Rate} & & \text{Population} \end{array}$$

Foreign-Born Emigration Projections

- Rates of emigration from the United States are estimated using a residual method and data from Census 2000 and the 2010 American Community Survey (ACS)
- The rates were produced and applied by age, sex, Hispanic origin, and arrival cohort
 - Immigrants who arrived in the past 0-9 years
 - Immigrants who arrived in the past 10-19 years
 - Immigrants who arrived 20 or more years ago

Calculating Projected Foreign-Born Emigrants

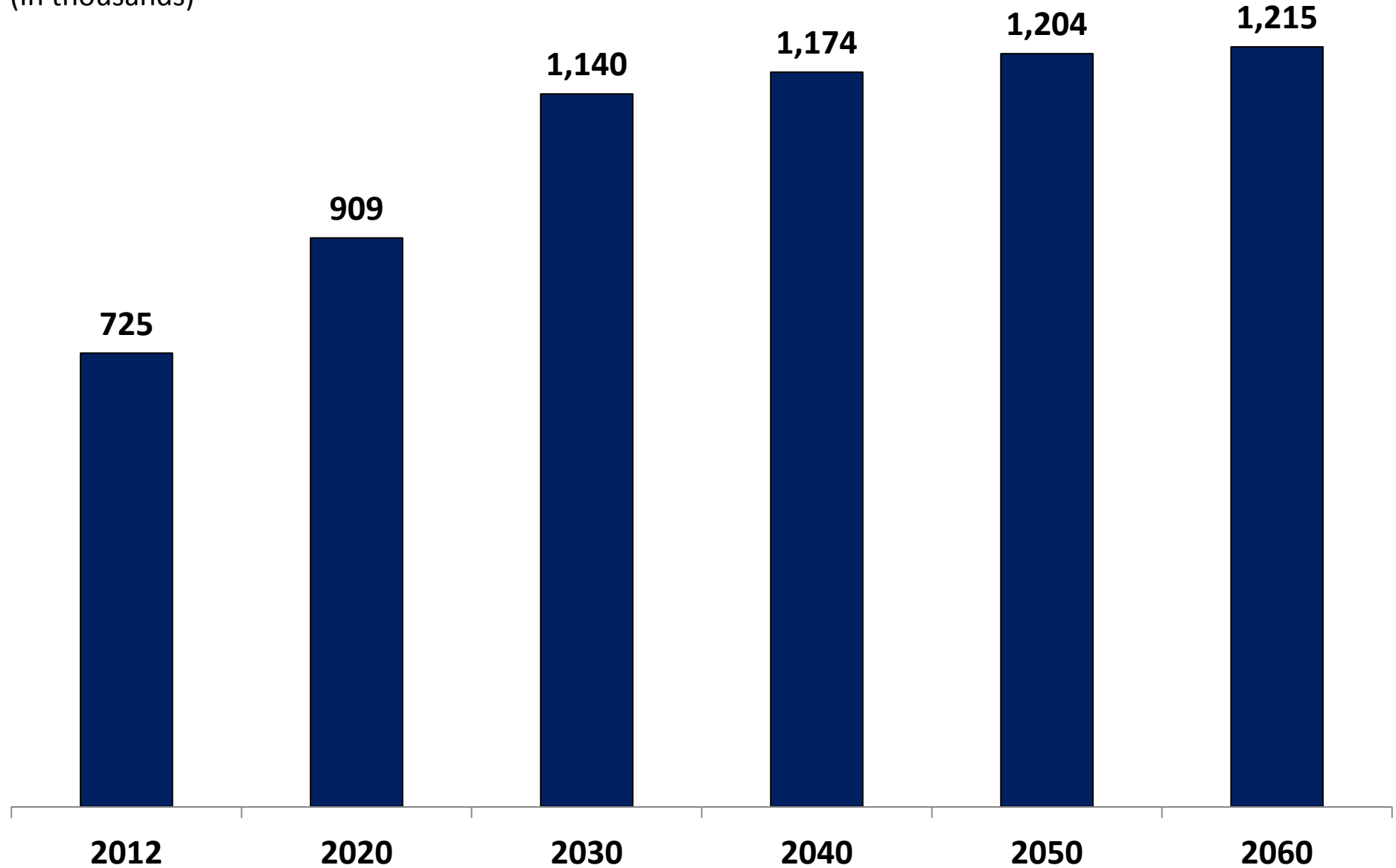
- Foreign-born emigration from the United States was projected by applying the emigration rates to the foreign-born population
- The same set of rates, by age, sex, Hispanic origin, and arrival cohort, were used for all projected years

Net Native-Born Migration Projections

- Comprised of migration of the native-born population, including migration from Puerto Rico to the United States
- Current estimates of net native-born migration are held constant in the projected years

Net International Migration: 2012 to 2060

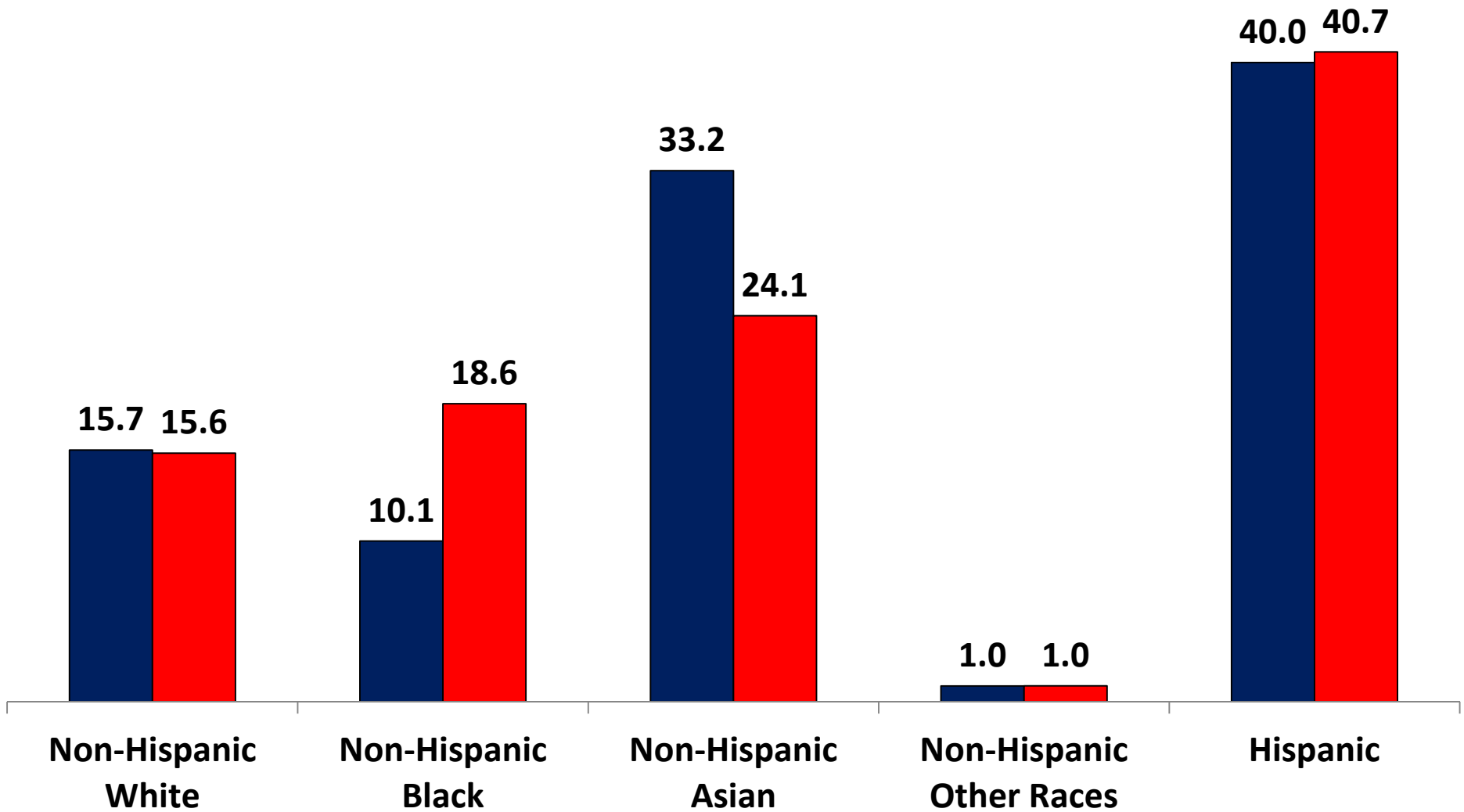
(In thousands)



Net International Migrants by Race and Hispanic Origin: 2012 and 2060

(Percent of total net international migrants)

■ 2012 ■ 2060



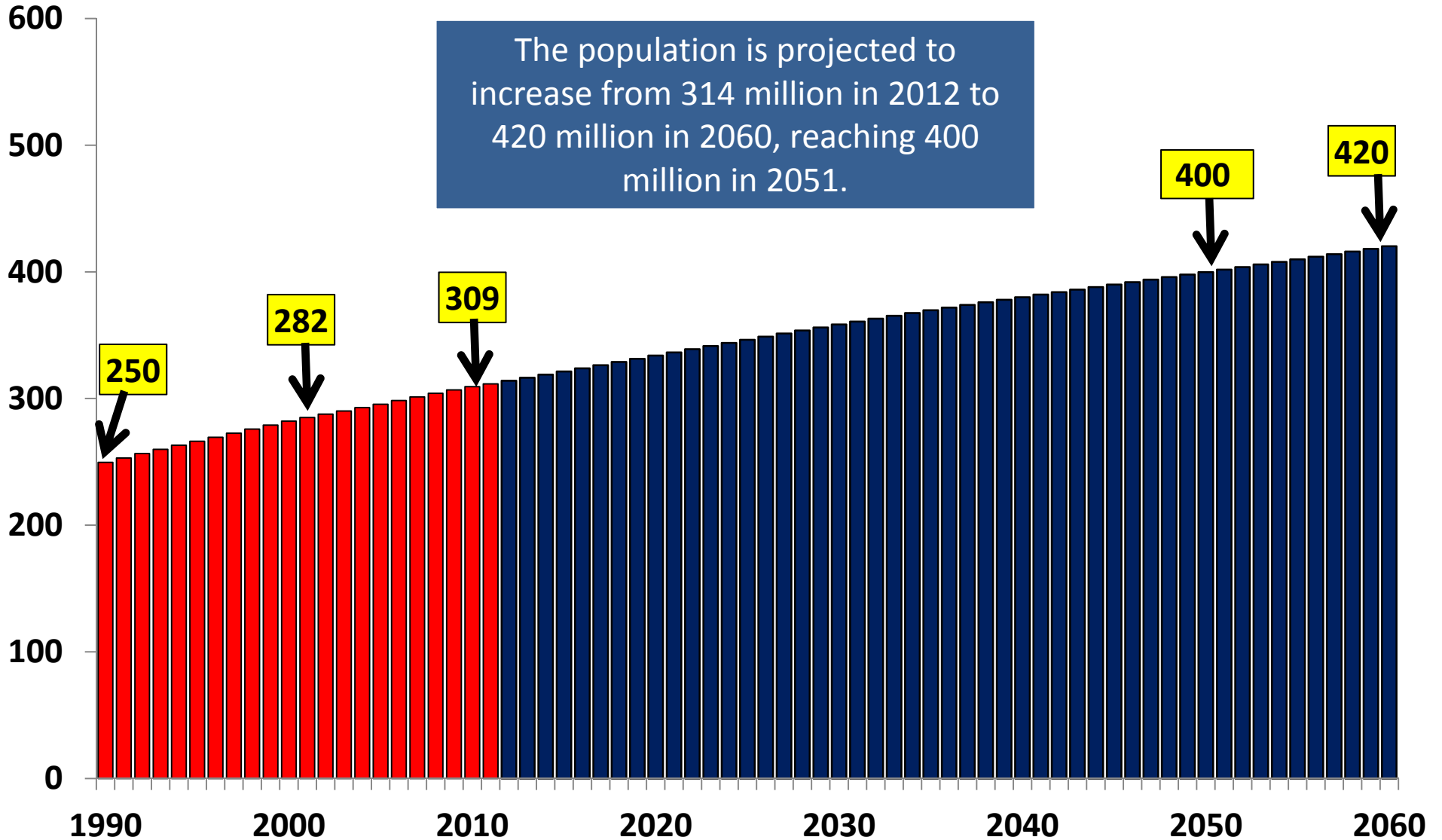
Main Findings

The U.S. population is projected to:

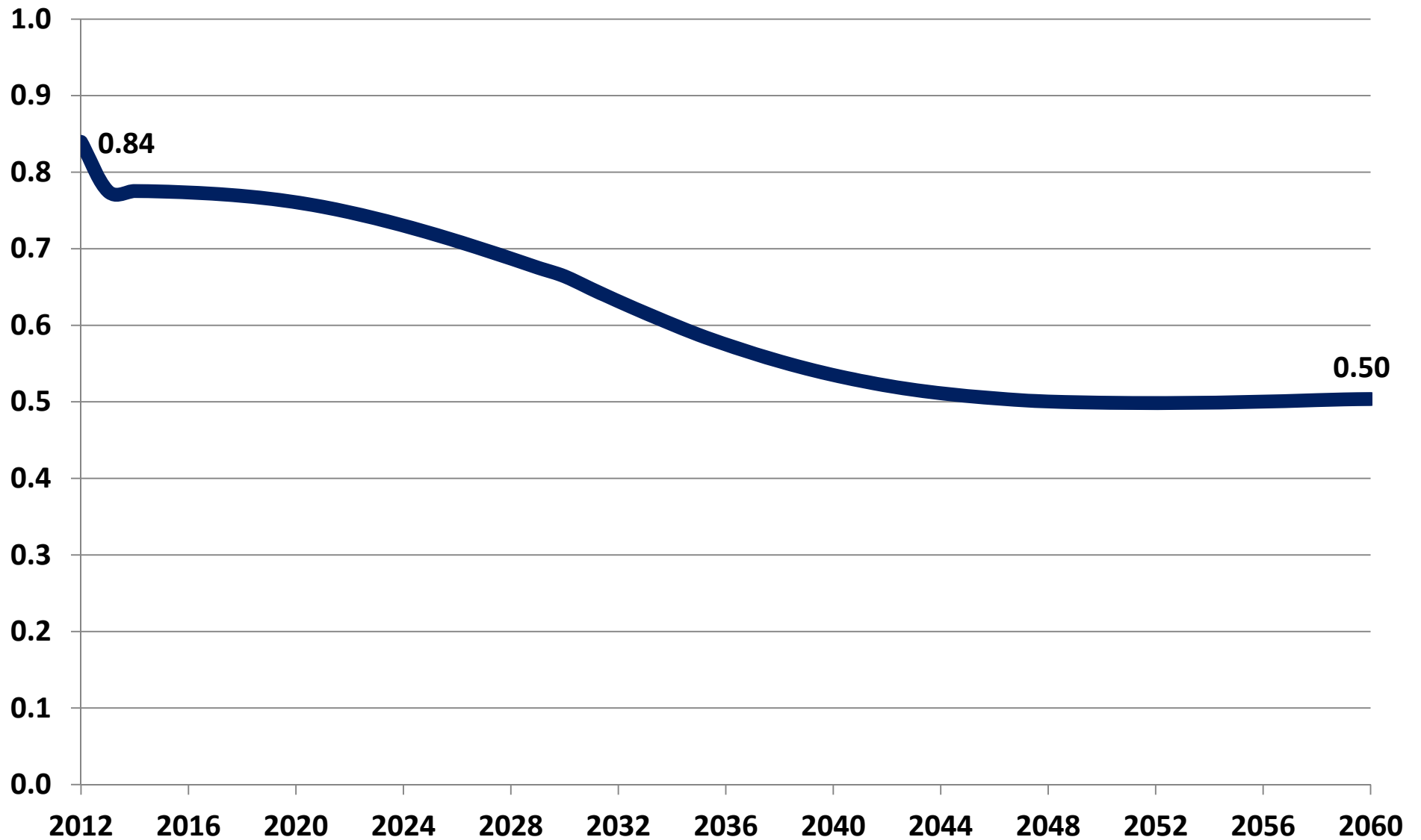
- Grow more slowly
- Continue aging
- Become more diverse

United States Population: 1990 to 2060

Numbers (in millions)



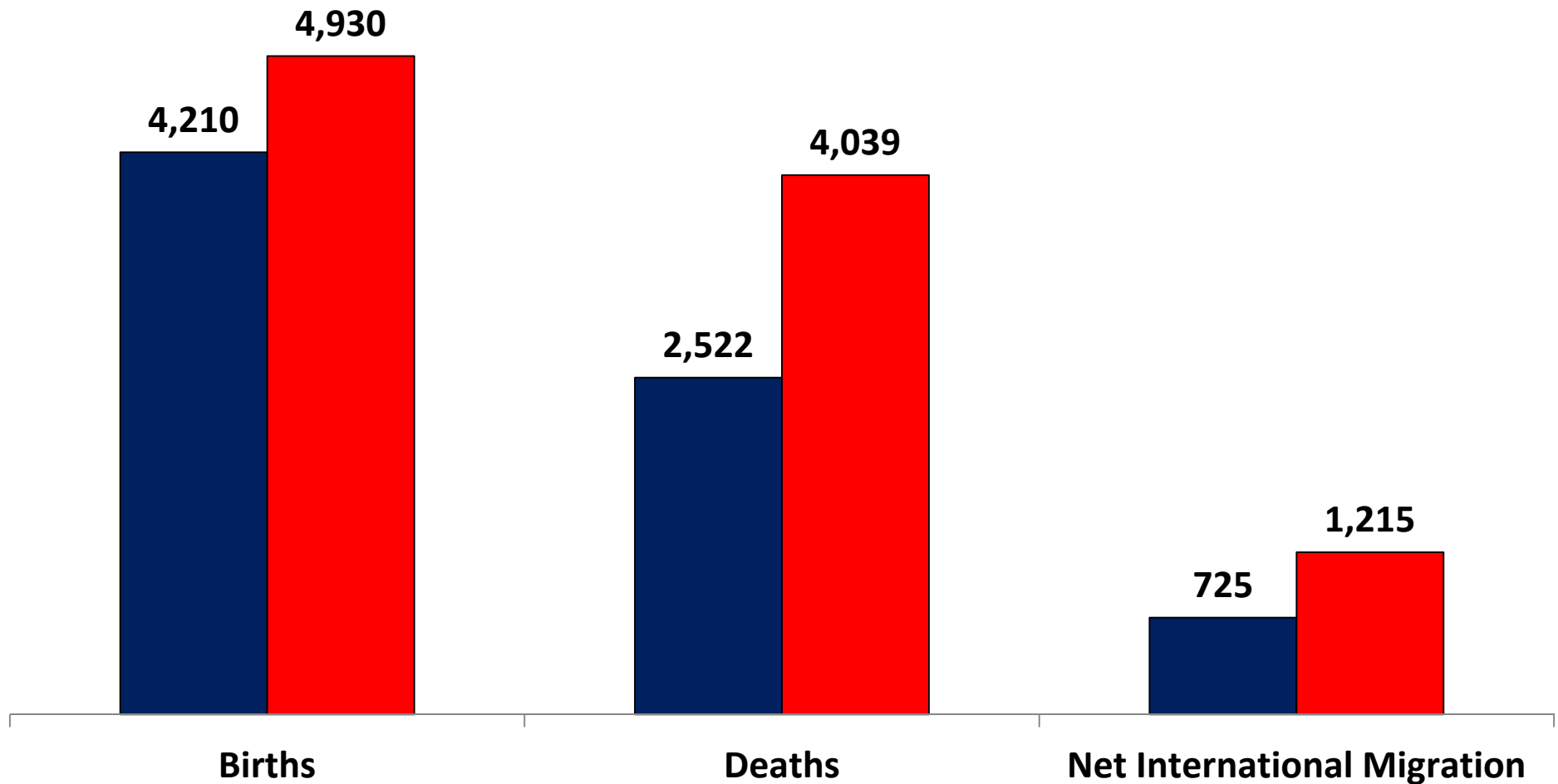
Annual Percent Change in Total Population: 2012 to 2060



Births, Deaths, and Net International Migration: 2012 and 2060

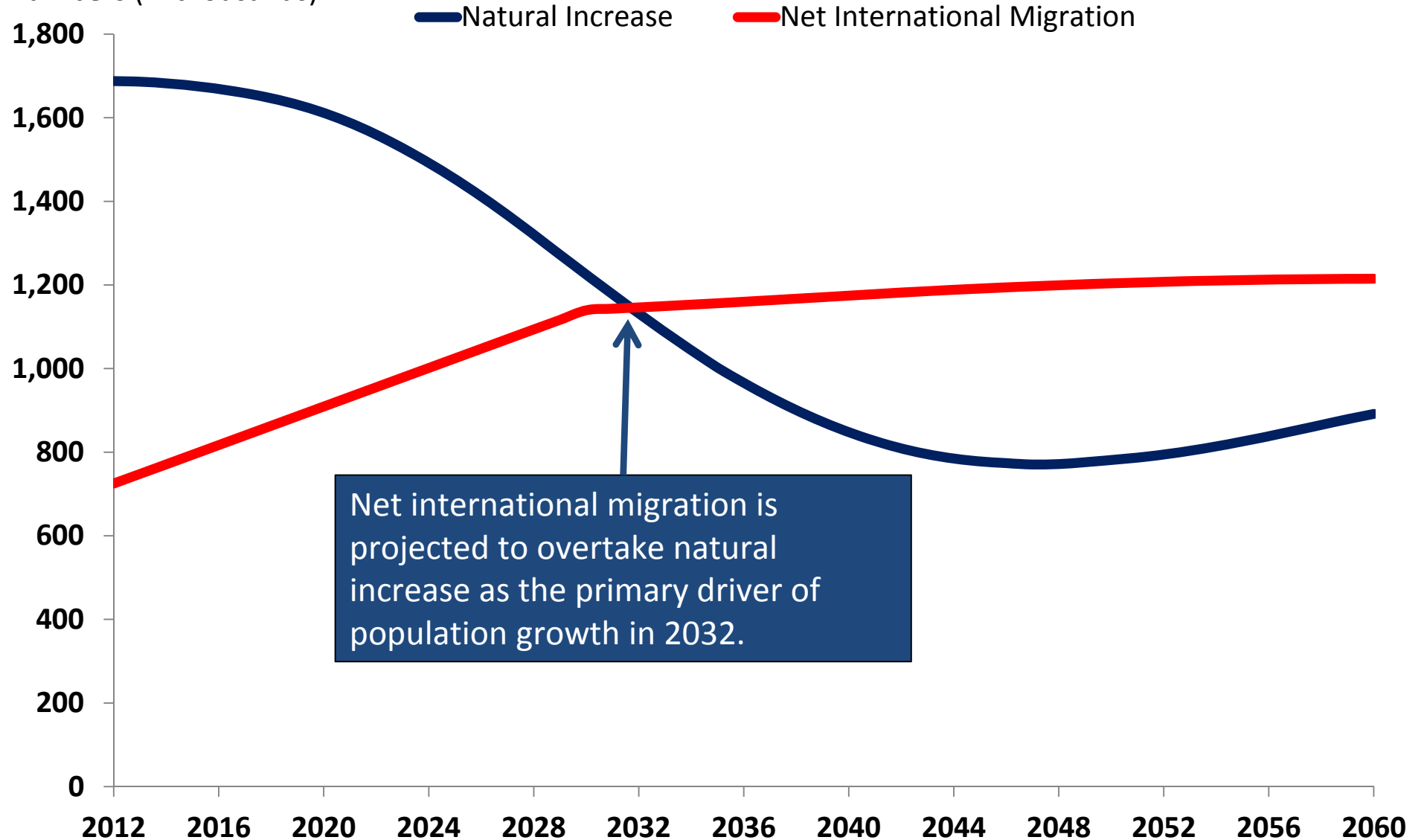
(Numbers in thousands)

■ 2012 ■ 2060



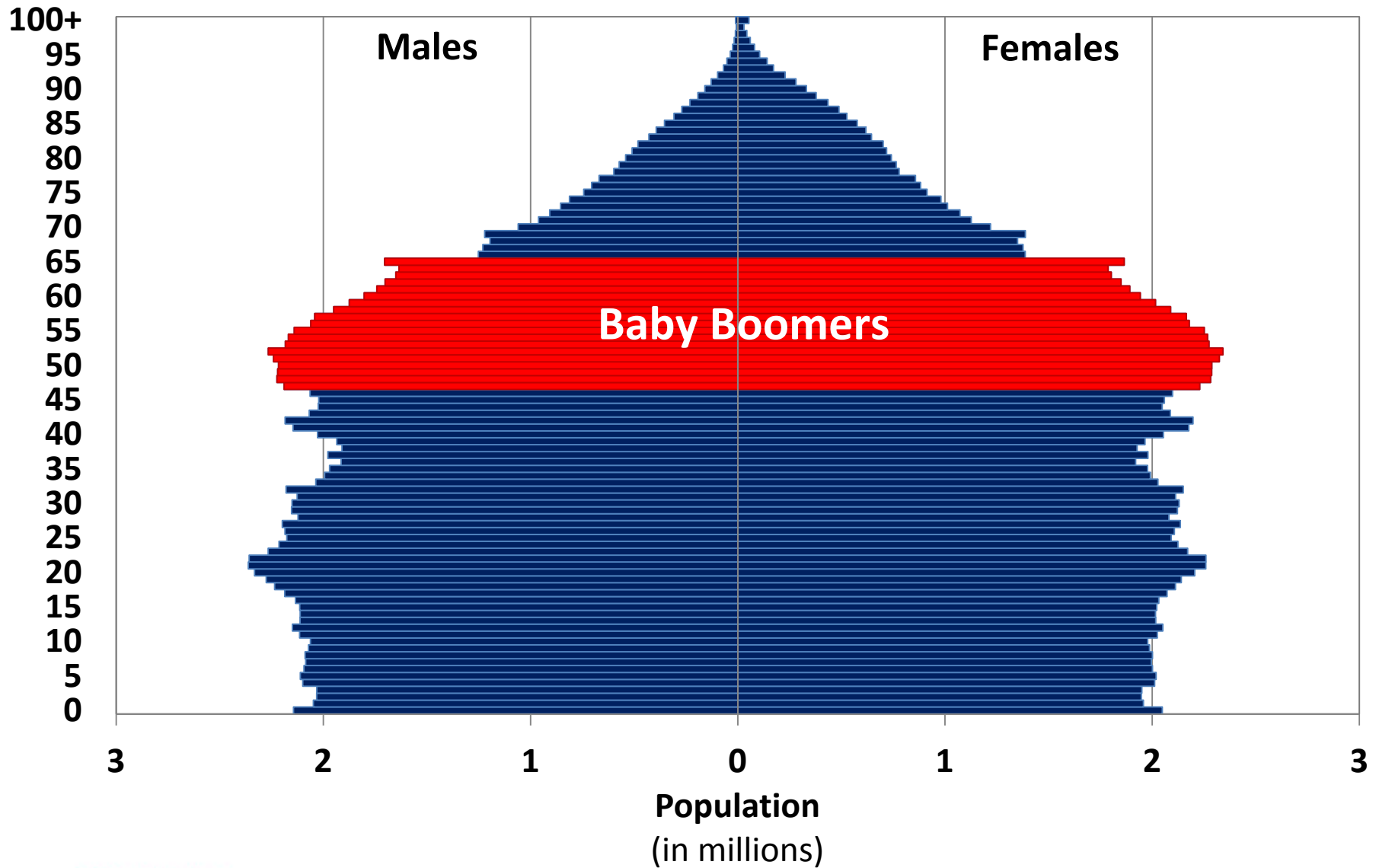
Natural Increase (Births - Deaths) and Net International Migration: 2012 to 2060

Numbers (in thousands)



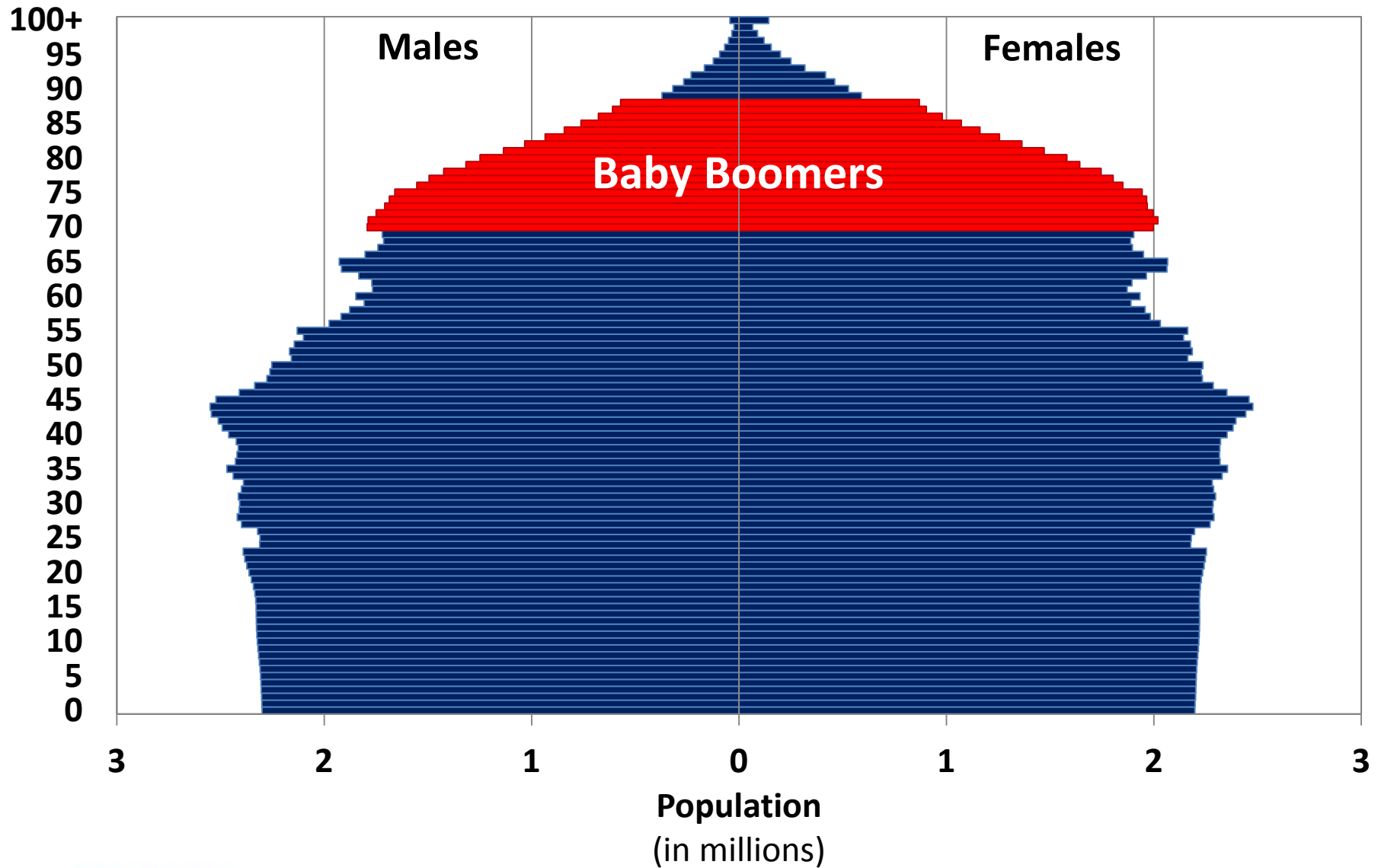
Population by Age and Sex: 2012

Age (years)



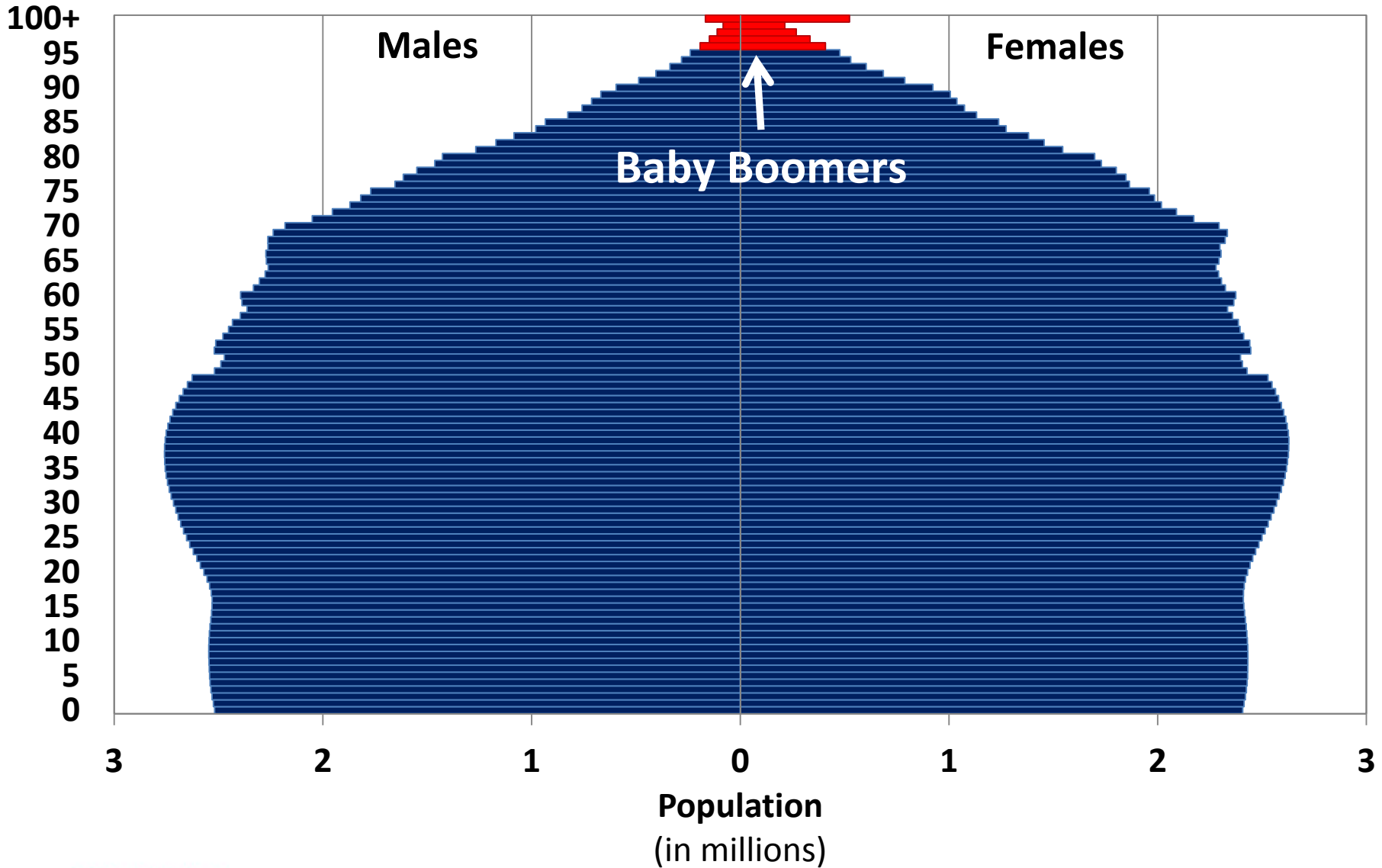
Population by Age and Sex: 2035

Age (years)

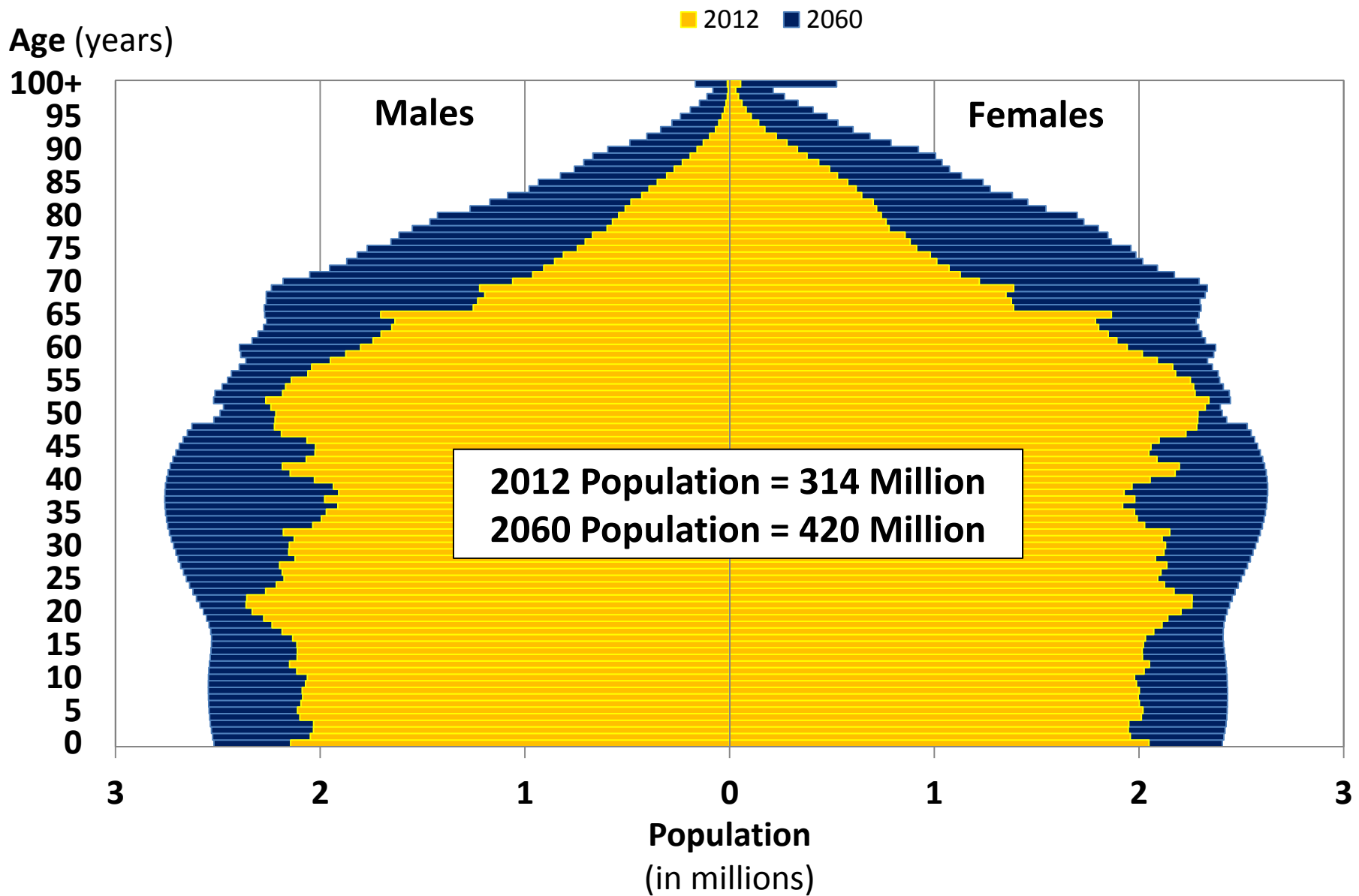


Population by Age and Sex: 2060

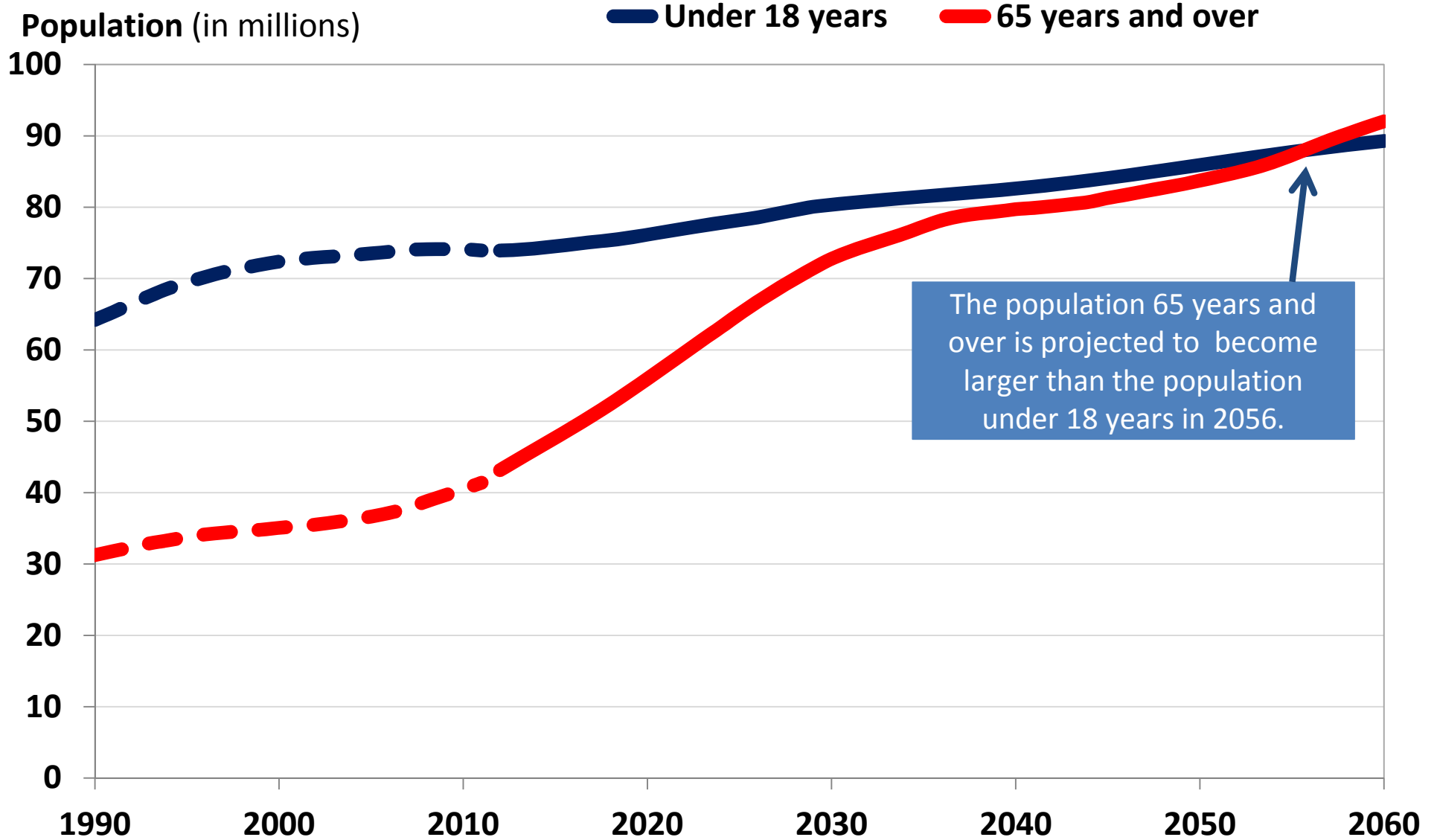
Age (years)



Population by Age and Sex: 2012 and 2060

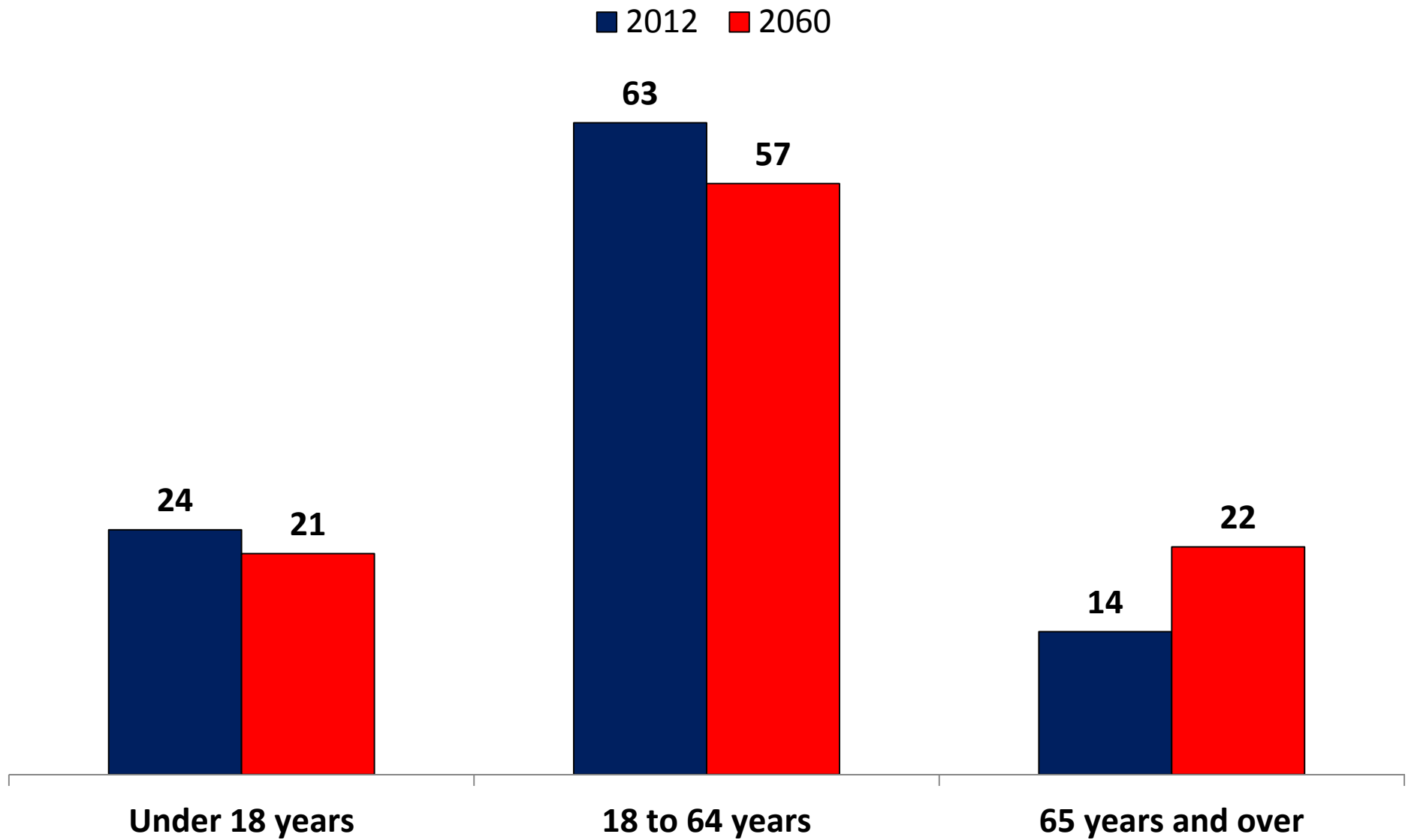


Population Under 18 Years and 65 Years and Over: 1990 to 2060



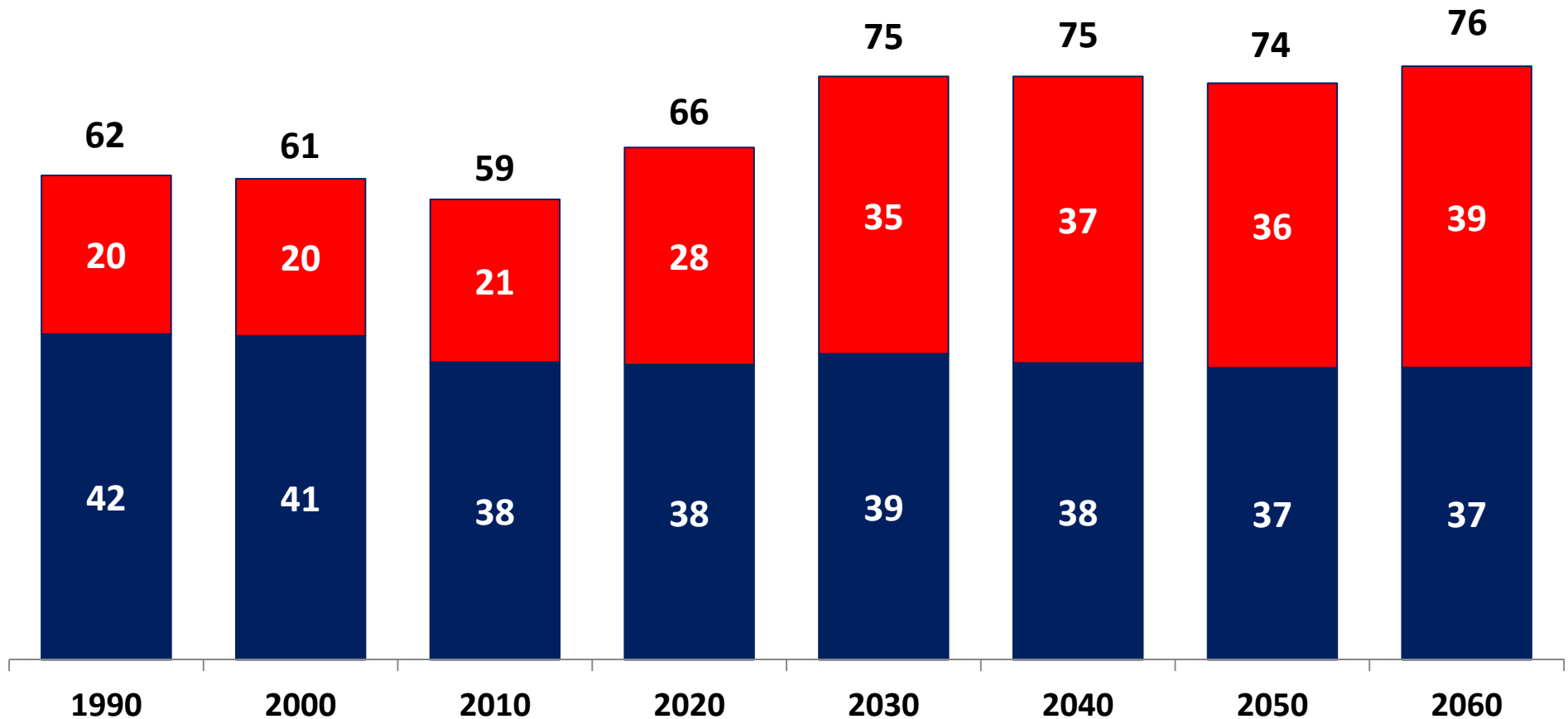
Distribution of Population by Age: 2012 and 2060

(Percent of total population)



Dependency Ratios for the United States: 1990 to 2060

■ Youth Dependency ■ Old-Age Dependency



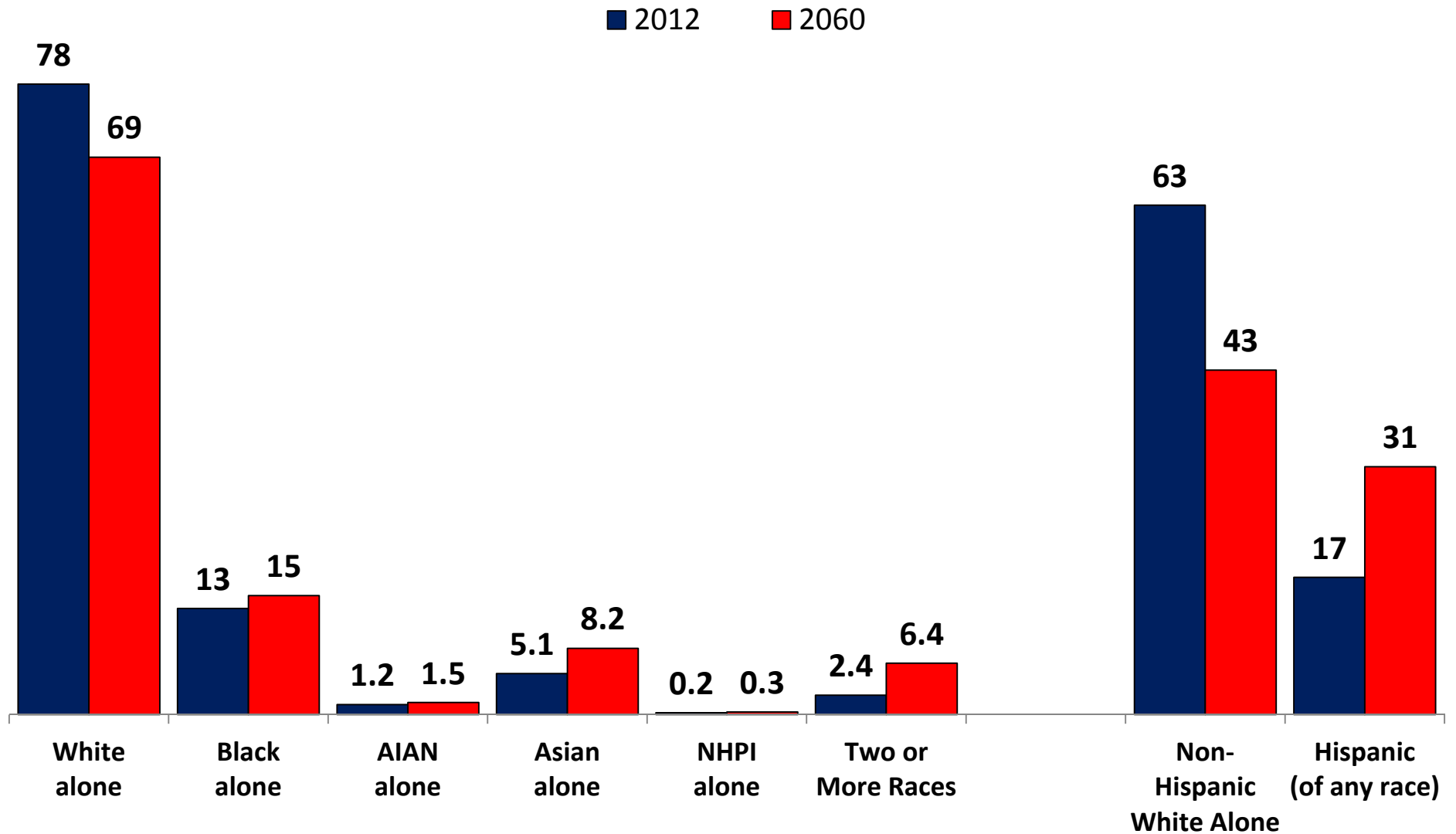
Total dependency = ((Population under age 18 + Population aged 65 years and over) / (Population aged 18 to 64 years)) * 100.

Old-age dependency = (Population aged 65 years and over / Population aged 18 to 64 years) * 100.

Youth dependency = (Population under age 18 / Population aged 18 to 64 years) * 100.

Population by Race and Hispanic Origin: 2012 and 2060

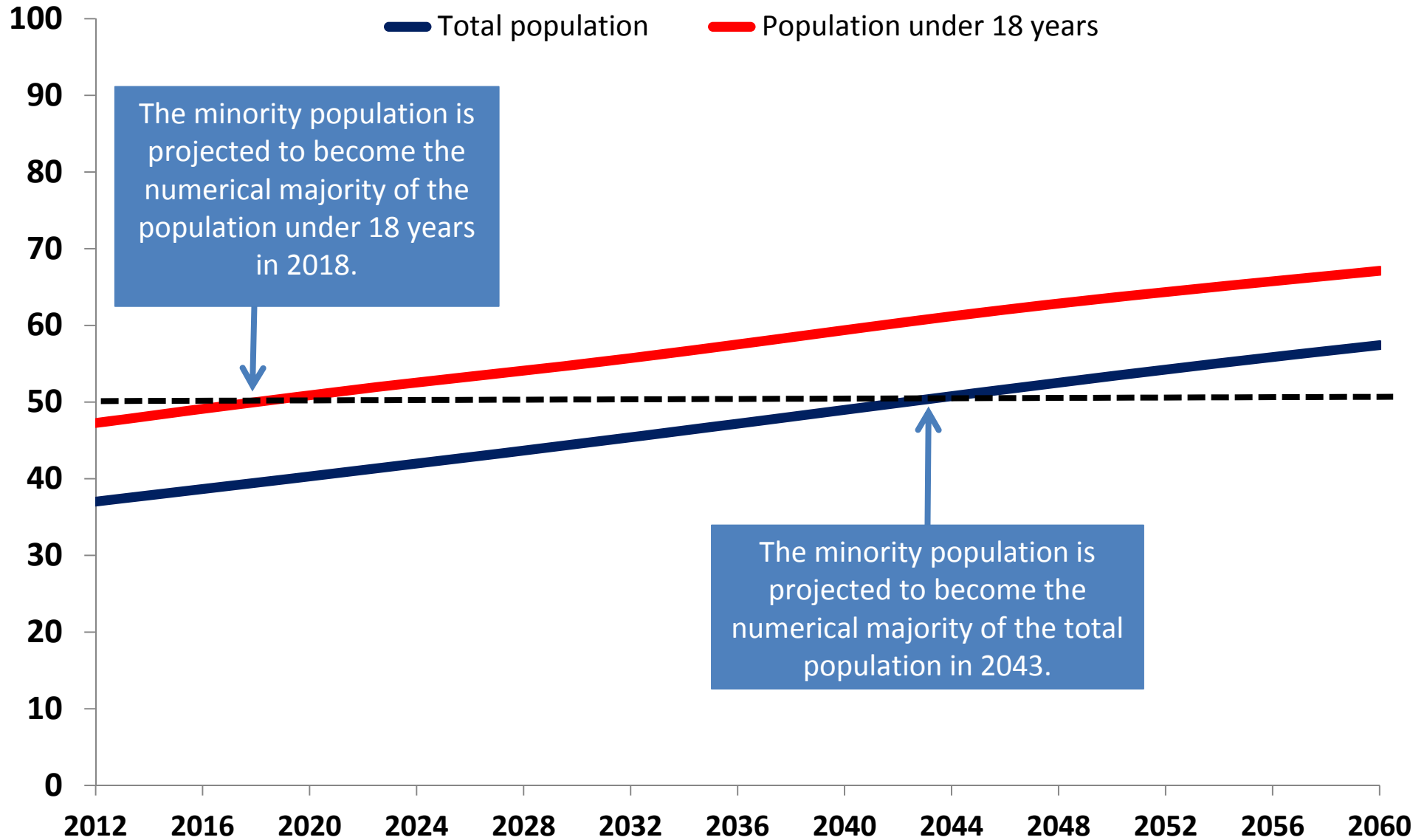
(Percent of total population)



AIAN=American Indian and Alaska Native; NHPI=Native Hawaiian and Other Pacific Islander

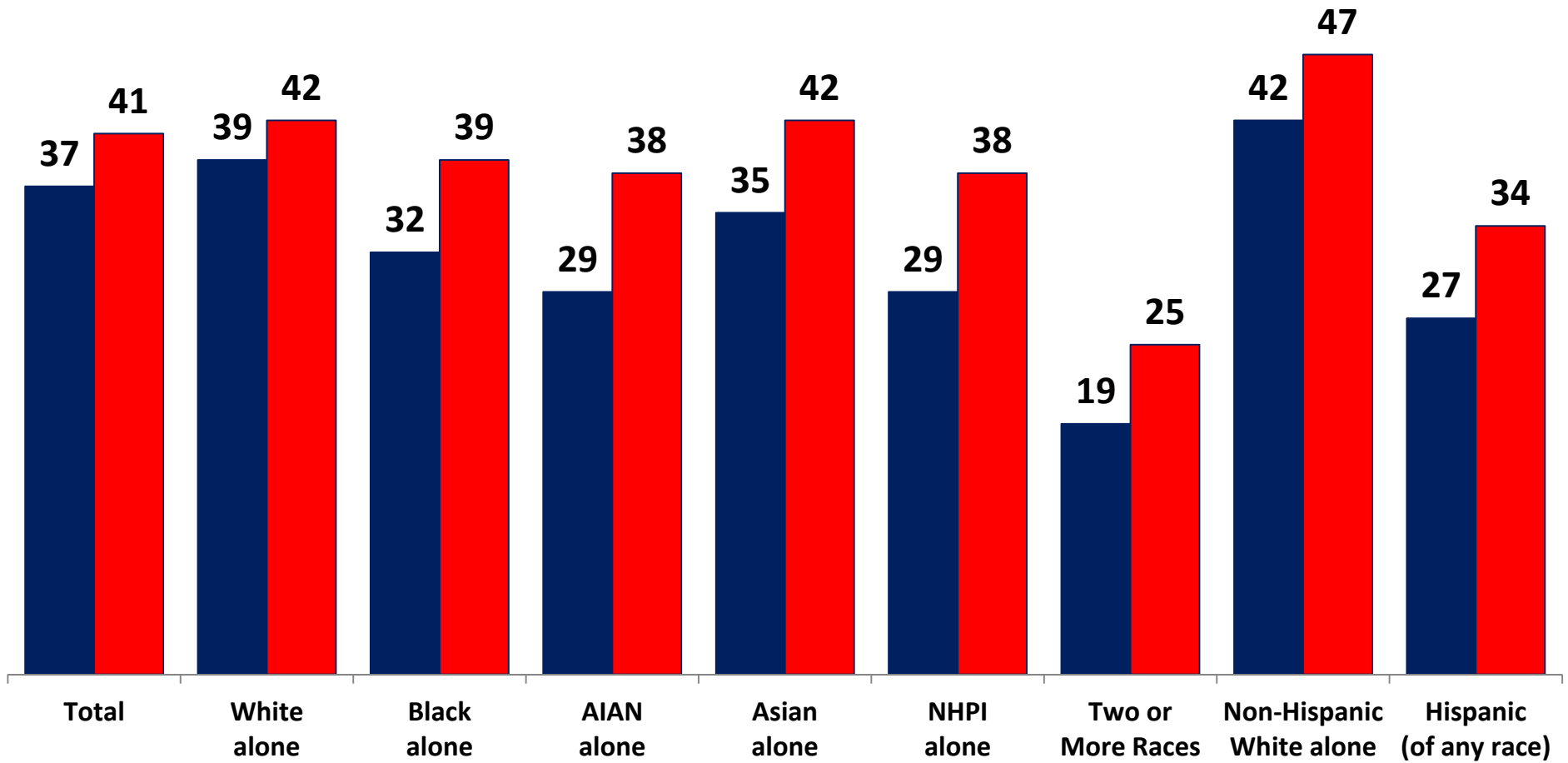
Projections of the Percent Minority: 2012 to 2060

Percent of total population



Median Age by Race and Hispanic Origin: 2012 and 2060

■ 2012 ■ 2060



AIAN=American Indian and Alaska Native; NHPI=Native Hawaiian and Other Pacific Islander

More Information

Census Bureau Projections Website:

<http://www.census.gov/population/projections>

Contact Information:

Jennifer Ortman

Jennifer.M.Ortman@census.gov

301-763-2428